

TAG Technical Assistance Report: Database Needs Assessment for Folk Arts Programs

**By
Dr. George Schoemaker
(Utah Arts Council, Folk Arts Program)**

In November of 2000, the Folk Arts peer group of the National Assembly of State Arts Agencies met to discuss database needs and standards among state folk arts programs in the United States. The consensus among folk arts programmers was the critical function that databases played in the daily work of employees of state arts agencies. The administration of grants, programming opportunities, and the dissemination of program information to constituents are chief concerns among state folk arts programs. Additionally, however, is a newer concern for the materials that state programs are beginning to archive independently or on a larger state level through state archives, state historical societies, or through other digitization initiatives.

With these concerns in mind, a database committee was formed to gather information regarding the state of database usage among programs. The goal of the committee was to “seek a better understanding of how to take advantage of and coordinate the emerging technology within and between programs.” In order to meet this goal, a TAG Technical Assistance grant was requested for \$1500 to assess the needs of state folk arts programs. I was hired to formulate, implement, and analyze a Database Needs Assessment Survey during the year 2001 and provide the findings to the committee. The following report presents the discussion of the survey findings.

I constructed a survey that consisted of approximately 70 questions and sent it to about 125 federal, state, and private agencies. In all, 43 agencies responded to the survey (about 35% of the total surveys mailed). Of the total number of surveys mailed out, 23 were returned by the post office because of outdated addresses or

because the organizations no longer existed. In actuality then, 42% of the agencies responded which is a very significant sampling.

The trends that emerged from the data indicate a high degree of proficiency in the area of information management, but that most agencies are overburdened with programming or other daily activities, and understaffed in their respective agencies to be keeping up with the huge amounts of data collected on a daily, weekly, and monthly basis, and the quickly changing and often obsolete technology. Information management activities that include genre identification, data entry, accessioning of artifacts or other media, creating preservation copies, digitization, labeling, storing, or in the case of maintaining agency contacts, updating contact information after bulk mailings, coordinating mail merge and labels for bulk mailings, and other tasks, are performed using one, two and sometimes more databases or applications. Most programmers would like to streamline their databases.

Another frustration of arts programmers is the unsatisfactory or complete lack of technical support. Twenty-one percent of the respondents were less than satisfied and 8.5% were greatly dissatisfied with their technical support from their Information Technology. I suspect that the IT support people are also overburdened with hardware and network problems which seem to come up on a daily basis and they too are understaffed and underpaid.

While database usage is a significant part of folk arts programs, many programmers acknowledge inadequate software, hardware, knowledge, and procedures in place to fully take advantage of the technology. Only 20.5% of the respondents have a system that is adequate for their purposes. Most programmers (17.1%) desire improvements, would like to streamline several databases into one (12.8%), which means there is a lot of redundant work taking place through double entry, but while improvements are desired, 13.7% of the respondents feel that personnel and time issues will remain a huge problem.

Change is also an issue. With the rapidly changing software and hardware technology comes an anxiety to learn and relearn new applications, new procedures, and new hardware. A large percentage of the respondents use Microsoft Access as their database and yet many of the respondents have limited knowledge of its capabilities (ie. whether it has concurrent usability, relational capabilities, importing and exporting of data from/to other applications, publishable to the web, etc). This trend suggests that knowledge of procedures and application capabilities is lacking on several levels and that conceptual problem solving using databases is hampered by this lack.

Several folk arts programmers wanted to receive feedback regarding the use of the Pearl Arts Management system (p. 20-24) that is an application designed specifically for the buyer using MS Access. Seven respondents use the Pearl system and five are satisfied or somewhat satisfied with it, while two respondents are less than satisfied with it. The main problems encountered have to do with expanding needs and continuous modifications that are needed to the database and which cannot be supported without a hefty price tag. With the lack of technical support, these arts programs are left with an antiquated albatross.

With issues of nomenclature, programmers are frustrated with development of genre and subgenre fields, dealing with huge miscellaneous classifications, and items that fall into several classifications. A majority of respondents (55.8%) knew about the Ethnographic Thesaurus being developed by the American Folklife Center (p. 42-46) and 70% of the respondents thought that it would be a useful tool in developing collections databases.

Concerns about the internet and having a web presence are high on the minds of programmers. A significant percentage of the respondents would like to have applications available on the web so that data could be entered remotely from anywhere. Almost a third of the respondents would like to have their artist database rosters available on the web and samples of their state collections so that researchers might have access to them.

Ultimately, the information gathered from this survey has the potential to function in many ways for our field. It can function as a needs statement justifying future coordination of activity, as a set of guidelines to assist in planning and design within individual programs and simply as an articulation of public folklore database concerns to academic peers.

	A	B	C	D	E	F	G	H	I	J	K	L	M	N	O	P	Q	R	S	T	U	V	W
1	Name of Organization	New York Folklore Society	Utah Folk Arts Program	WESTAF	Tennessee Folklife Program	Virginia Folklife Program	DC Commission--Folk Arts	Nevada Folk Arts Program	Hallockville Folklife Center--NY	Oregon Folklife Program	Massachusetts Cultural Council	Montana Folklife Program	RI Folk Arts Program	Louisiana Folklife Program	Florida Folklife Program	Mississippi Arts Commission	Haffenreffer Museum--Brown Univ.	Western Folklife Center	Florida Folklife Program	North Dakota Endowment on Arts	South Dakota Arts Council	ACTA--Fresno Arts Council	Alabama Folklife Program
2	What kind of organization best describes you?																						
3	Federal																						
4	State		1		1		1	1			1	1	1	1	1	1			1	1	1		1
5	Regional																						
6	City																						
7	Private	1		1		1			1	1							1	1				1	
8	Academic																1						
9	Non-profit																						
10																							
11	How would you rate yourself as a computer user?																						
12	Expert			1																			
13	Proficient		1							1												1	
14	Average	1			1	1	1	1	1		1	1	1	1	1	1	1	1	1	1		1	1
15	Novice																						
16																							
17																							
18	In your office situation, what computer platform do you, and most of your colleagues use?																						
19	IBM-PC	1	1	1	1	1	1		1	1	1	1	1	1	1	1	1	1	1	1	1	1	1
20	Macintosh							1															
21																							

	A	X	Y	Z	AA	AB	AC	AD	AE	AF	AG	AH	AI	AJ	AK	AL	AM	AN	AO	AP	AQ	AR	AS	AT	AU
1	Name of Organization	Kentucky Folklife Program	CCA/Trinidad State Jr. College	Vermont Folklife Center	WA State Arts Commission	Institute for Cultural Partnerships	Iowa Arts Council	Wisconsin Arts Board	South Georgia Folklife	Wyoming Arts Council	American Folklife Center	Maryland Folklife Program	Colorado Folk Arts Program	SC Arts Commission	Center for Southern Folklife	Conn. Cultural Heritage Arts	New Mexico Arts	LA County Arts Commission	Maine Folklife Center	Folklife Center--Inter. House	Traditional Arts Indiana	Georgia Folklife Prog.	Totals	Percentage	
2	What kind of organization best describes you?																								
3	Federal										1												1	2.2%	
4	State	1	1		1		1	1	1	1		1	1	1			1						1	26	56.5%
5	Regional																	1					1	2.2%	
6	City												1										1	2.2%	
7	Private			1										1						1			11	23.9%	
8	Academic		1																1		1		4	8.7%	
9	Non-profit					1										1							2	4.3%	
10																							46	100.00%	
11	How would you rate yourself as a computer user?																								
12	Expert																						1	2.1%	
13	Proficient			1	1	1	1			1	3	1		1			1	1	1				16	34.0%	
14	Average	1	1					1	1		2		1		1	1				1	1	1	30	63.8%	
15	Novice																						0	0.0%	
16																							47	100.00%	
17																									
18	In your office situation, what computer platform do you, and most of your colleagues use?																								
19	IBM-PC	1	1	1	1	1	1	1		1	1	1	1	1	1	1	1	1		1	1	1	40	93.0%	
20	Macintosh								1										1				3	7.0%	
21																							43	100.00%	

	A	B	C	D	E	F	G	H	I	J	K	L	M	N	O	P	Q	R	S	T	U	V	W
1	Name of Organization	New York Folklore Society	Utah Folk Arts Program	WESTAF	Tennessee Folklife Program	Virginia Folklife Program	DC Commission--Folk Arts	Nevada Folk Arts Program	Hallockville Folklife Center--NY	Oregon Folklife Program	Massachusetts Cultural Council	Montana Folklife Program	RI Folk Arts Program	Louisiana Folklife Program	Florida Folklife Program	Mississippi Arts Commission	Haffenreffer Museum--Brown Univ.	Western Folklife Center	Florida Folklife Program	North Dakota Endowment on Arts	South Dakota Arts Council	ACTA--Fresno Arts Council	Alabama Folklife Program
22	What operating system do you use?																						
23	Windows 3.1																						
24	Windows 95			1		1						1			1		1		1	1			
25	Windows 98	1	1	1		1	1		1	1	1			1		1	1	1					1
26	Windows 2000		1						1			1		1								1	
27	Windows NT			1	1	1								1		1	1		1	1		1	1
28	Mac OS							1															
29	Novell		1		1					1			1		1								
30	Linux																						
31	No Network								1														
32	Don't know	1					1	1			1	1			1				1				
33	In your organization, do you have the option to change to other platforms and software applications?																						
34	YES	1		1					1				1				1	1				1	
35	NO		1		1	1		1		1	1			1	1	1				1	1		1
36	Not Sure						1					1							1				
37																							
38																							
39																							

	A	X	Y	Z	AA	AB	AC	AD	AE	AF	AG	AH	AI	AJ	AK	AL	AM	AN	AO	AP	AQ	AR	AS	AT	AU
1	Name of Organization	Kentucky Folklife Program	CCA/Trinidad State Jr. College	Vermont Folklife Center	WA State Arts Commission	Institute for Cultural Partnerships	Iowa Arts Council	Wisconsin Arts Board	South Georgia Folklife	Wyoming Arts Council	American Folklife Center	Maryland Folklife Program	Colorado Folk Arts Program	SC Arts Commission	Center for Southern Folklife	Conn. Cultural Heritage Arts	New Mexico Arts	LA County Arts Comission	Maine Folklife Center	Folklife Center--Inter. House	Traditional Arts Indiana	Georgia Folklife Prog.	Totals	Percentage	
22	What operating system do you use?																								
23	Windows 3.1																1						1	1.1%	
24	Windows 95						1			1	1						1						11	12.2%	
25	Windows 98	1	1	1		1	1						1	1	1	1	1			1	1		24	26.7%	
26	Windows 2000				1							1					1	1					9	10.0%	
27	Windows NT	1	1		1	1	1	1			1	1					1	1			1	1	21	23.3%	
28	Mac OS								1										1				3	3.3%	
29	Novell									1				1	1							1	9	10.0%	
30	Linux														1								1	1.1%	
31	No Network												1										2	2.2%	
32	Don't know																		1	1			9	10.0%	
33																							90	100.00%	
34	In your organization, do you have the option to change to other platforms and software applications?																								
35	YES			1	1	1			1				1			1	1		1				15	34.1%	
36	NO		1				1	1		1	1	1	1	1	1			1			1	1	24	54.5%	
37	Not Sure	1																		1			5	11.4%	
38																							44	100.00%	

	A	B	C	D	E	F	G	H	I	J	K	L	M	N	O	P	Q	R	S	T	U	V	W
1	Name of Organization	New York Folklore Society	Utah Folk Arts Program	WESTAF	Tennessee Folklife Program	Virginia Folklife Program	DC Commission--Folk Arts	Nevada Folk Arts Program	Hallockville Folklife Center--NY	Oregon Folklife Program	Massachusetts Cultural Council	Montana Folklife Program	RI Folk Arts Program	Louisiana Folklife Program	Florida Folklife Program	Mississippi Arts Commission	Haffenreffer Museum--Brown Univ.	Western Folklife Center	Florida Folklife Program	North Dakota Endowment on Arts	South Dakota Arts Council	ACTA--Fresno Arts Council	Alabama Folklife Program
40	Is there a governing person, department, or agency that determines hardware and software policies in your organization?																						
41	YES		1		1	1		1	1	1			1	1	1	1	1				1		1
42	NO	1																1				1	
43	Not Sure						1				1	1							1	1			
44	No response			1																			
45																							
46	Do your Information Technology people provide technical support for your software applications?																						
47	Don't have them	1																				1	
48	YES		1	1	1	1	1	1		1	1	1	1	1	1	1	1	1	1	1	1	1	1
49	NO								1														
50																							

	A	X	Y	Z	AA	AB	AC	AD	AE	AF	AG	AH	AI	AJ	AK	AL	AM	AN	AO	AP	AQ	AR	AS	AT	AU	
1	Name of Organization	Kentucky Folklife Program	CCA/Trinidad State Jr. College	Vermont Folklife Center	WA State Arts Commission	Institute for Cultural Partnerships	Iowa Arts Council	Wisconsin Arts Board	South Georgia Folklife	Wyoming Arts Council	American Folklife Center	Maryland Folklife Program	Colorado Folk Arts Program	SC Arts Commission	Center for Southern Folklore	Conn. Cultural Heritage Arts	New Mexico Arts	LA County Arts Comission	Maine Folklife Center	Folklife Center--Inter. House	Traditional Arts Indiana	Georgia Folklife Prog.	Totals	Percentage		
40	Is there a governing person, department, or agency that determines hardware and software policies in your organization?																									
41	YES		1	1	1		1	1	1	1	1	1	1	1	1	1	1	1	1	1	1	1	1	30	69.8%	
42	NO					1								1					1					6	14.0%	
43	Not Sure	1																						6	14.0%	
44	No response																							1	2.3%	
45																								43	100.00%	
46	Do your Information Technology people provide technical support for your software applications?																									
47	Don't have them			1									1												4	9.3%
48	YES		1		1		1	1	1	1	1	1		1	1	1		1	1	1	1	1	1	35	81.4%	
49	NO	1				1											1							4	9.3%	
50																								43	100.00%	

	A	B	C	D	E	F	G	H	I	J	K	L	M	N	O	P	Q	R	S	T	U	V	W
1	Name of Organization	New York Folklore Society	Utah Folk Arts Program	WESTAF	Tennessee Folklife Program	Virginia Folklife Program	DC Commission--Folk Arts	Nevada Folk Arts Program	Hallockville Folklife Center--NY	Oregon Folklife Program	Massachusetts Cultural Council	Montana Folklife Program	RI Folk Arts Program	Louisiana Folklife Program	Florida Folklife Program	Mississippi Arts Commission	Haffenreffer Museum--Brown Univ.	Western Folklife Center	Florida Folklife Program	North Dakota Endowment on Arts	South Dakota Arts Council	ACTA--Fresno Arts Council	Alabama Folklife Program
51	How would you rate your Information Technology people in terms of performance satisfaction?																						
52	Don't have them	1																				1	
53	Greatly satisfied		1		1					1									1		1		
54	Somewhat satisfied		1			1					1			1	1	1	1	1					1
55	Satisfied							1					1										
56	Less than satisfied			1					1			1											
57	Greatly dissatisfied (they suck!)																			1			
58																							
59	Is there a digitization initiative in place in your state or region?																						
60	YES	1		1		1	1	1		1					1							1	
61	NO				1				1						1		1	1					1
62	Not Sure		1								1	1	1			1			1	1		1	
63																							

	A	X	Y	Z	AA	AB	AC	AD	AE	AF	AG	AH	AI	AJ	AK	AL	AM	AN	AO	AP	AQ	AR	AS	AT	AU
1	Name of Organization	Kentucky Folklife Program	CCA/Trinidad State Jr. College	Vermont Folklife Center	WA State Arts Commission	Institute for Cultural Partnerships	Iowa Arts Council	Wisconsin Arts Board	South Georgia Folklife	Wyoming Arts Council	American Folklife Center	Maryland Folklife Program	Colorado Folk Arts Program	SC Arts Commission	Center for Southern Folklore	Conn. Cultural Heritage Arts	New Mexico Arts	LA County Arts Comission	Maine Folklife Center	Folklife Center--Inter. House	Traditional Arts Indiana	Georgia Folklife Prog.	Totals	Percentage	
51	How would you rate your Information Technology people in terms of performance satisfaction?																								
52	Don't have them			1									1											4	8.5%
53	Greatly satisfied					1			1					1		1					1	1	12	25.5%	
54	Somewhat satisfied				1		1			1					1								13	27.7%	
55	Satisfied					1				2						1		1					7	14.9%	
56	Less than satisfied	1	1						1	2	1									1			10	21.3%	
57	Greatly dissatisfied (they suck!)																						1	2.1%	
58																							47	100.00%	
59	Is there a digitization initiative in place in your state or region?																								
60	YES	1	1		1		1	1		1			1				1					1		17	39.5%
61	NO			1		1				1		1		1				1	1					14	32.6%
62	Not Sure								1						1					1		1		12	27.9%
63																							43	100.00%	

	A	B	C	D	E	F	G	H	I	J	K	L	M	N	O	P	Q	R	S	T	U	V	W
1	Name of Organization	New York Folklore Society	Utah Folk Arts Program	WESTAF	Tennessee Folklife Program	Virginia Folklife Program	DC Commission--Folk Arts	Nevada Folk Arts Program	Hallockville Folklife Center--NY	Oregon Folklife Program	Massachusetts Cultural Council	Montana Folklife Program	RI Folk Arts Program	Louisiana Folklife Program	Florida Folklife Program	Mississippi Arts Commission	Haffenreffer Museum--Brown Univ.	Western Folklife Center	Florida Folklife Program	North Dakota Endowment on Arts	South Dakota Arts Council	ACTA--Fresno Arts Council	Alabama Folklife Program
64	What is your program's current state of database development/use?																						
65	No database in place																						
66	Limited database in use			1																			1
67	Have several different databases in use but desire to streamline the system.								1	1										1	1	1	
68	Database system in place that is adequate for immediate needs	1	1	1		1		1	1	1	1		1	1	1			1	1	1	1		
69	Desire improvements in current system			1			1	1	1		1	1		1						1	1		
70	State of data entry is relatively satisfactory for current system		1	1				1			1			1	1		1	1	1		1		
71	Agency is currently supportive of database improvement for the program			1	1										1	1	1			1			1
72	Even with improvements in database development, personnel/time issues for data entry will remain a problem		1		1						1			1	1		1			1		1	
73																							

	A	X	Y	Z	AA	AB	AC	AD	AE	AF	AG	AH	AI	AJ	AK	AL	AM	AN	AO	AP	AQ	AR	AS	AT	AU
1	Name of Organization	Kentucky Folklife Program	CCA/Trinidad State Jr. College	Vermont Folklife Center	WA State Arts Commission	Institute for Cultural Partnerships	Iowa Arts Council	Wisconsin Arts Board	South Georgia Folklife	Wyoming Arts Council	American Folklife Center	Maryland Folklife Program	Colorado Folk Arts Program	SC Arts Commission	Center for Southern Folklife	Conn. Cultural Heritage Arts	New Mexico Arts	LA County Arts Comission	Maine Folklife Center	Folklife Center--Inter. House	Traditional Arts Indiana	Georgia Folklife Prog.	Totals	Percentage	
64	What is your program's current state of database development/use?																								
65	No database in place								1			1											2	1.7%	
66	Limited database in use	1		1																	1		5	4.3%	
67	Have several different databases in use but desire to streamline the system.	1	1		1	1	1				1			1			1				1		15	12.8%	
68	Database system in place that is adequate for immediate needs			1		1	1		1				1		1			1		1	1		24	20.5%	
69	Desire improvements in current system	1		1		1		1		1	1		1			1	1					1	1	20	17.1%
70	State of data entry is relatively satisfactory for current system			1		1	1	1						1	1				1			1		18	15.4%
71	Agency is currently supportive of database improvement for the program	1		1		1	1	1		1			1			1		1					1	17	14.5%
72	Even with improvements in database development, personnel/time issues for data entry will remain a problem			1		1	1				1		1		1		1				1		16	13.7%	
73																							117	100.00%	

	A	B	C	D	E	F	G	H	I	J	K	L	M	N	O	P	Q	R	S	T	U	V	W		
1	Name of Organization	New York Folklore Society	Utah Folk Arts Program	WESTAF	Tennessee Folklife Program	Virginia Folklife Program	DC Commission--Folk Arts	Nevada Folk Arts Program	Hallockville Folklife Center--NY	Oregon Folklife Program	Massachusetts Cultural Council	Montana Folklife Program	RI Folk Arts Program	Louisiana Folklife Program	Florida Folklife Program	Mississippi Arts Commission	Haffenreffer Museum--Brown Univ.	Western Folklife Center	Florida Folklife Program	North Dakota Endowment on Arts	South Dakota Arts Council	ACTA--Fresno Arts Council	Alabama Folklife Program		
74	Can you foresee your folk arts program being able to purchase a more expensive (high-end), stand-alone database program for its use in the future?																								
75	YES																						1	1	
76	NO	1			1	1	1		1	1				1	1			1	1	1	1				
77	Not Sure		1	1				1			1	1	1			1									
78	No response																1								
79																									
80	In what price range would you feel comfortable spending money on a high-end database application?																								
81	\$500-1500	1									1	1							1	1					
82	\$1500-3000							1															1	1	
83	\$3000-6000																								
84	\$6000-8000														1										
85	\$8000-10,000		1																						
86	Over \$10,000																								
87	Not Applicable				1	1	1		1						1			1			1				
88	No response			1						1			1			1	1								
89																									
90	Do you keep a database of your artists, performers, and contacts?																								
91	YES	1	1	1	1	1	1	1	1	1	1	1	1	1	1	1	1	1	1	1	1	1	1	1	
92	NO																								
93																									

	A	X	Y	Z	AA	AB	AC	AD	AE	AF	AG	AH	AI	AJ	AK	AL	AM	AN	AO	AP	AQ	AR	AS	AT	AU
1	Name of Organization	Kentucky Folklife Program	CCA/Trinidad State Jr. College	Vermont Folklife Center	WA State Arts Commission	Institute for Cultural Partnerships	Iowa Arts Council	Wisconsin Arts Board	South Georgia Folklife	Wyoming Arts Council	American Folklife Center	Maryland Folklife Program	Colorado Folk Arts Program	SC Arts Commission	Center for Southern Folklife	Conn. Cultural Heritage Arts	New Mexico Arts	LA County Arts Comission	Maine Folklife Center	Folklife Center--Inter. House	Traditional Arts Indiana	Georgia Folklife Prog.	Totals	Percentage	
74	Can you foresee your folk arts program being able to purchase a more expensive (high-end), stand-alone database program for its use in the future?																								
75	YES			1	1							1											5	10.6%	
76	NO					1			1	2		1	1	1					1	1			21	44.7%	
77	Not Sure	1	1			1	1	1		3						1	1	1			1	1	20	42.6%	
78	No response																						1	2.1%	
79																							47	100.00%	
80	In what price range would you feel comfortable spending money on a high-end database application?																								
81	\$500-1500		1			1	1						1	1	1								11	25.6%	
82	\$1500-3000																				1	1	5	11.6%	
83	\$3000-6000	1																1					2	4.7%	
84	\$6000-8000											1											2	4.7%	
85	\$8000-10,000				1																		2	4.7%	
86	Over \$10,000			1																			1	2.3%	
87	Not Applicable									1													8	18.6%	
88	No response					1		1	1					1		1	1	1					12	27.9%	
89																							43	100.00%	
90	Do you keep a database of your artists, performers, and contacts?																								
91	YES	1	1		1	1	1	1		1			1	1	1	1	1	1		1	1	1	38	88.4%	
92	NO			1					1	1	1								1				5	11.6%	
93																							43	100.00%	

	A	B	C	D	E	F	G	H	I	J	K	L	M	N	O	P	Q	R	S	T	U	V	W
1	Name of Organization	New York Folklore Society	Utah Folk Arts Program	WESTAF	Tennessee Folklife Program	Virginia Folklife Program	DC Commission--Folk Arts	Nevada Folk Arts Program	Hallockville Folklife Center--NY	Oregon Folklife Program	Massachusetts Cultural Council	Montana Folklife Program	RI Folk Arts Program	Louisiana Folklife Program	Florida Folklife Program	Mississippi Arts Commission	Haffenreffer Museum--Brown Univ.	Western Folklife Center	Florida Folklife Program	North Dakota Endowment on Arts	South Dakota Arts Council	ACTA--Fresno Arts Council	Alabama Folklife Program
94	How long has your organization kept a contact database?																						
95	1-5 years			1	1		1					1							1			1	1
96	6-8 years	1	1					1		1							1						
97	9-12 years					1									1								
98	13-15 years								1					1				1					1
99	16-20 years																						
100	over 20 years																			1			
101	Not Applicable																						
102	No response										1		1			1							
103																							
104																							
105	How many contact records do you have in your database?																						
106	Less than 500					1		1									1				1		1
107	501-1500				1		1		1	1		1		1	1								
108	1501-2500	1									1								1			1	
109	2501-3500																						
110	3501-5000			1																			
111	5001-7500	1																					
112	7501-10,000																						
113	Over 10,000																	1					
114	Not Sure																			1			
115	Not Applicable																						
116	No response												1			1							
117																							

	A	X	Y	Z	AA	AB	AC	AD	AE	AF	AG	AH	AI	AJ	AK	AL	AM	AN	AO	AP	AQ	AR	AS	AT	AU
1	Name of Organization	Kentucky Folklife Program	CCA/Trinidad State Jr. College	Vermont Folklife Center	WA State Arts Commission	Institute for Cultural Partnerships	Iowa Arts Council	Wisconsin Arts Board	South Georgia Folklife	Wyoming Arts Council	American Folklife Center	Maryland Folklife Program	Colorado Folk Arts Program	SC Arts Commission	Center for Southern Folklore	Conn. Cultural Heritage Arts	New Mexico Arts	LA County Arts Comission	Maine Folklife Center	Folklife Center--Inter. House	Traditional Arts Indiana	Georgia Folklife Prog.	Totals	Percentage	
94	How long has your organization kept a contact database?																								
95	1-5 years				1		1	1						1						1	1		13	30.2%	
96	6-8 years				1										1								7	16.3%	
97	9-12 years	1				1							1				1	1		1		1	9	20.9%	
98	13-15 years									1													5	11.6%	
99	16-20 years																						0	0.0%	
100	over 20 years																						1	2.3%	
101	Not Applicable										1	1											2	4.7%	
102	No response	1	1											1									6	14.0%	
103																						43	100.00%		
104																									
105	How many contact records do you have in your database?																								
106	Less than 500															1				1			7	16.7%	
107	501-1500	1				1	1		1					1	1						1	1	15	35.7%	
108	1501-2500				1	1																	6	14.3%	
109	2501-3500																	1					1	2.4%	
110	3501-5000												1										2	4.8%	
111	5001-7500											1								1			3	7.1%	
112	7501-10,000																						0	0.0%	
113	Over 10,000																						1	2.4%	
114	Not Sure		1																				2	4.8%	
115	Not Applicable										1												1	2.4%	
116	No response			1													1						4	9.5%	
117																						42	100.00%		

	A	B	C	D	E	F	G	H	I	J	K	L	M	N	O	P	Q	R	S	T	U	V	W	
1	Name of Organization	New York Folklore Society	Utah Folk Arts Program	WESTAF	Tennessee Folklife Program	Virginia Folklife Program	DC Commission--Folk Arts	Nevada Folk Arts Program	Hallockville Folklife Center--NY	Oregon Folklife Program	Massachusetts Cultural Council	Montana Folklife Program	RI Folk Arts Program	Louisiana Folklife Program	Florida Folklife Program	Mississippi Arts Commission	Haffenreffer Museum--Brown Univ.	Western Folklife Center	Florida Folklife Program	North Dakota Endowment on Arts	South Dakota Arts Council	ACTA--Fresno Arts Council	Alabama Folklife Program	
118	On average, how many NEW records do you enter per year?																							
119	More than 100	1		1	1													1	1				1	
120	Between 80-100									1		1			1									
121	Between 60-80											1			1									
122	Between 40-60										1													
123	Between 20-40		1					1						1								1		
124	Less than 20						1		1								1							1
125	Not Applicable																							
126	No response					1															1			
127																								
128	What is the status of your current contact database system?																							
129	Independent database.				1		1			1					1			1	1				1	
130	We keep two databases.		1		1			1	1			1		1								1		
131	Included as part of the larger Arts organization database system WITH NO CLEAR distinction.												1			1	1							1
132	Included as part of the larger Arts organization database system WITH A CLEAR distinction.	1	1			1					1										1			
133	No organized database in place																							
134	Not Applicable																							
135	No response			1																				
136																								

	A	X	Y	Z	AA	AB	AC	AD	AE	AF	AG	AH	AI	AJ	AK	AL	AM	AN	AO	AP	AQ	AR	AS	AT	AU
1	Name of Organization	Kentucky Folklife Program	CCA/Trinidad State Jr. College	Vermont Folklife Center	WA State Arts Commission	Institute for Cultural Partnerships	Iowa Arts Council	Wisconsin Arts Board	South Georgia Folklife	Wyoming Arts Council	American Folklife Center	Maryland Folklife Program	Colorado Folk Arts Program	SC Arts Commission	Center for Southern Folklore	Conn. Cultural Heritage Arts	New Mexico Arts	LA County Arts Commission	Maine Folklife Center	Folklife Center--Inter. House	Traditional Arts Indiana	Georgia Folklife Prog.	Totals	Percentage	
118	On average, how many NEW records do you enter per year?																								
119	More than 100	1			1	1						1	1		1		1	1					14	33.3%	
120	Between 80-100														1								3	7.1%	
121	Between 60-80						1							1							1		5	11.9%	
122	Between 40-60	1					1																3	7.1%	
123	Between 20-40							1	1						1							1	8	19.0%	
124	Less than 20																			1			5	11.9%	
125	Not Applicable										1												1	2.4%	
126	No response		1																				3	7.1%	
127																							42	100.00%	
128	What is the status of your current contact database system?																								
129	Independent database.	1			1	1			1				1	1		1				1	1		16	33.3%	
130	We keep two databases.												1								1		9	18.8%	
131	Included as part of the larger Arts organization database system WITH NO CLEAR distinction.		1									1										1	7	14.6%	
132	Included as part of the larger Arts organization database system WITH A CLEAR distinction.						1	1		1				1		1	1			1			12	25.0%	
133	No organized database in place														1								1	2.1%	
134	Not Applicable										1												1	2.1%	
135	No response		1																				2	4.2%	
136																							48	100.00%	

	A	B	C	D	E	F	G	H	I	J	K	L	M	N	O	P	Q	R	S	T	U	V	W
1	Name of Organization	New York Folklore Society	Utah Folk Arts Program	WESTAF	Tennessee Folklife Program	Virginia Folklife Program	DC Commission--Folk Arts	Nevada Folk Arts Program	Hallockville Folklife Center--NY	Oregon Folklife Program	Massachusetts Cultural Council	Montana Folklife Program	RI Folk Arts Program	Louisiana Folklife Program	Florida Folklife Program	Mississippi Arts Commission	Haffenreffer Museum--Brown Univ.	Western Folklife Center	Florida Folklife Program	North Dakota Endowment on Arts	South Dakota Arts Council	ACTA--Fresno Arts Council	Alabama Folklife Program
137	What kind of database are you using at the moment for these contacts?																						
138	Pearl										1		1	1									
139	MS Access	1		1	1	1			1	1	1	1		1	1	1			1	1	1	1	
140	MS Excell																						
141	Filemaker Pro		1				1	1				1											
142	Goldmine		1																				
143	Dbase																						
144	Other			1					1								1	1					1
145	MS Outlook																						
146	Not Applicable																						
147	No response																						
148																							
149	Does this database software have concurrent usability?																						
150	YES		1	1	1	1	1	1		1	1	1	1	1	1	1	1	1	1				1
151	NO	1							1			1										1	
152	Not Sure																			1		1	
153	Not Applicable																						
154	No response																						
155																							

	A	X	Y	Z	AA	AB	AC	AD	AE	AF	AG	AH	AI	AJ	AK	AL	AM	AN	AO	AP	AQ	AR	AS	AT	AU
1	Name of Organization	Kentucky Folklife Program	CCA/Trinidad State Jr. College	Vermont Folklife Center	WA State Arts Commission	Institute for Cultural Partnerships	Iowa Arts Council	Wisconsin Arts Board	South Georgia Folklife	Wyoming Arts Council	American Folklife Center	Maryland Folklife Program	Colorado Folk Arts Program	SC Arts Commission	Center for Southern Folklore	Conn. Cultural Heritage Arts	New Mexico Arts	LA County Arts Comission	Maine Folklife Center	Folklife Center--Inter. House	Traditional Arts Indiana	Georgia Folklife Prog.	Totals	Percentage	
137	What kind of database are you using at the moment for these contacts?																								
138	Pearl						1							1									1	6	11.1%
139	MS Access	1			1	1	1					1	1	1		1	1			1	1		1	26	48.1%
140	MS Excell					1																1	2	3.7%	
141	Filemaker Pro		1		1					1			1											8	14.8%
142	Goldmine																							1	1.9%
143	Dbase																1							1	1.9%
144	Other																							5	9.3%
145	MS Outlook					1																		1	1.9%
146	Not Applicable										1													1	1.9%
147	No response			1					1							1								3	5.6%
148																								54	100.00%
149	Does this database software have concurrent usability?																								
150	YES				1	1	1	1				1		1	1		1	1				1	1	28	65.1%
151	NO									1														5	11.6%
152	Not Sure	1	1										1							1				6	14.0%
153	Not Applicable									1														1	2.3%
154	No response			1					1							1								3	7.0%
155																								43	100.00%

	A	B	C	D	E	F	G	H	I	J	K	L	M	N	O	P	Q	R	S	T	U	V	W
1	Name of Organization	New York Folklore Society	Utah Folk Arts Program	WESTAF	Tennessee Folklife Program	Virginia Folklife Program	DC Commission--Folk Arts	Nevada Folk Arts Program	Hallockville Folklife Center--NY	Oregon Folklife Program	Massachusetts Cultural Council	Montana Folklife Program	RI Folk Arts Program	Louisiana Folklife Program	Florida Folklife Program	Mississippi Arts Commission	Haffenreffer Museum--Brown Univ.	Western Folklife Center	Florida Folklife Program	North Dakota Endowment on Arts	South Dakota Arts Council	ACTA--Fresno Arts Council	Alabama Folklife Program
156	Do you have an accessioning system in place for these contacts?																						
157	YES	1	1	1	1	1	1	1	1	1	1	1	1	1	1	1	1	1	1	1	1	1	1
158	NO		1			1		1	1		1			1				1					
159	Not Sure																						
160	No response																						
161																							
162	Import data in either comma-delimited or tab-delimited format?																						
163	YES	1	1	1	1	1	1			1				1	1			1					1
164	NO																						
165	Not Sure							1	1			1	1			1	1		1	1	1	1	
166	No response										1												
167																							
168	Is the Pearl arts-management database system used by your organization?																						
169	YES				1						1		1	1									
170	NO	1	1	1		1	1	1	1	1		1			1	1	1	1	1	1	1	1	1
171	Not Sure																						
172	No response																						
173																							

	A	X	Y	Z	AA	AB	AC	AD	AE	AF	AG	AH	AI	AJ	AK	AL	AM	AN	AO	AP	AQ	AR	AS	AT	AU
1	Name of Organization	Kentucky Folklife Program	CCA/Trinidad State Jr. College	Vermont Folklife Center	WA State Arts Commission	Institute for Cultural Partnerships	Iowa Arts Council	Wisconsin Arts Board	South Georgia Folklife	Wyoming Arts Council	American Folklife Center	Maryland Folklife Program	Colorado Folk Arts Program	SC Arts Commission	Center for Southern Folklife	Conn. Cultural Heritage Arts	New Mexico Arts	LA County Arts Commission	Maine Folklife Center	Folklife Center--Inter. House	Traditional Arts Indiana	Georgia Folklife Prog.	Totals	Percentage	
156	Do you have an accessioning system in place for these contacts?																								
157	YES	1				1	1					1	1	1		1			1	1	1	1	25	58.1%	
158	NO		1			1			1	1	1	1				1		1					15	34.9%	
159	Not Sure				1																		1	2.3%	
160	No response			1															1				2	4.7%	
161																							43	100.00%	
162	Import data in either comma-delimited or tab-delimited format?																								
163	YES	1				1	1			1		1	1	1	1		1	1					21	50.0%	
164	NO								1														1	2.4%	
165	Not Sure		1		1			1								1				1	1	1	17	40.5%	
166	No response			1							1												3	7.1%	
167																							42	100.00%	
168	Is the Pearl arts-management database system used by your organization?																								
169	YES							1						1									7	16.7%	
170	NO	1	1	1	1	1	1		1	1	1	1	1	1	1	1	1	1			1	1	35	83.3%	
171	Not Sure																						0	0.0%	
172	No response																						0	0.0%	
173																							42	100.00%	

	A	B	C	D	E	F	G	H	I	J	K	L	M	N	O	P	Q	R	S	T	U	V	W
1	Name of Organization	New York Folklore Society	Utah Folk Arts Program	WESTAF	Tennessee Folklife Program	Virginia Folklife Program	DC Commission--Folk Arts	Nevada Folk Arts Program	Hallockville Folklife Center--NY	Oregon Folklife Program	Massachusetts Cultural Council	Montana Folklife Program	RI Folk Arts Program	Louisiana Folklife Program	Florida Folklife Program	Mississippi Arts Commission	Haffenreffer Museum--Brown Univ.	Western Folklife Center	Florida Folklife Program	North Dakota Endowment on Arts	South Dakota Arts Council	ACTA--Fresno Arts Council	Alabama Folklife Program
174	In what year was it (Pearl) implemented in your agency?																						
175		1980				2000						1998 1999											
176	Is your folk arts program required to input/update folk artist information for a larger Pearl-based artist directory maintained by your State Arts Agency?																						
177	YES				1						1		1	1									
178	NO																						
179	Not Sure																						
180	Not Applicable/No response	1		1																		1	1
181																							
182																							
183	Indicate your degree of satisfaction with the Pearl Database system as it now exists in your program:																						
184	Greatly satisfied																						
185	Somewhat satisfied										1			1									
186	Satisfied																						
187	Less than satisfied				1								1										
188	Greatly dissatisfied (it suck!)																						
189	Not Applicable/No response	1																					
190																							

	A	X	Y	Z	AA	AB	AC	AD	AE	AF	AG	AH	AI	AJ	AK	AL	AM	AN	AO	AP	AQ	AR	AS	AT	AU
1	Name of Organization	Kentucky Folklife Program	CCA/Trinidad State Jr. College	Vermont Folklife Center	WA State Arts Commission	Institute for Cultural Partnerships	Iowa Arts Council	Wisconsin Arts Board	South Georgia Folklife	Wyoming Arts Council	American Folklife Center	Maryland Folklife Program	Colorado Folk Arts Program	SC Arts Commission	Center for Southern Folklore	Conn. Cultural Heritage Arts	New Mexico Arts	LA County Arts Commission	Maine Folklife Center	Folklife Center--Inter. House	Traditional Arts Indiana	Georgia Folklife Prog.	Totals	Percentage	
174	In what year was it (Pearl)							1992						2000											
175	implemented in your agency?																								
176	Is your folk arts program required to input/update folk artist information for a larger Pearl-based artist directory maintained by your State Arts Agency?																								
177	YES													1									1	6	23.1%
178	NO						1								1									2	7.7%
179	Not Sure																							0	0.0%
180	Not Applicable/No response			1	1	1	1		1	1	1	1			1	1	1	1	1	1	1			18	69.2%
181																								26	100.00%
182																									
183	Indicate your degree of satisfaction with the Pearl Database system as it now exists in your program:																								
184	Greatly satisfied																							0	0.0%
185	Somewhat satisfied													1										3	15.0%
186	Satisfied						1															1	2	10.0%	
187	Less than satisfied																							2	10.0%
188	Greatly dissatisfied (it suck!)																							0	0.0%
189	Not Applicable/No response			1	1	1	1		1	1	1	1			1	1	1	1						13	65.0%
190																								20	100.00%

	A	B	C	D	E	F	G	H	I	J	K	L	M	N	O	P	Q	R	S	T	U	V	W
1	Name of Organization	New York Folklore Society	Utah Folk Arts Program	WESTAF	Tennessee Folklife Program	Virginia Folklife Program	DC Commission--Folk Arts	Nevada Folk Arts Program	Hallockville Folklife Center--NY	Oregon Folklife Program	Massachusetts Cultural Council	Montana Folklife Program	RI Folk Arts Program	Louisiana Folklife Program	Florida Folklife Program	Mississippi Arts Commission	Haffenreffer Museum--Brown Univ.	Western Folklife Center	Florida Folklife Program	North Dakota Endowment on Arts	South Dakota Arts Council	ACTA--Fresno Arts Council	Alabama Folklife Program
191	Would your program be in a position to contribute financially to the development of an MS Access-based, Pearl-compatible database application to be shared among folk arts programs?																						
192	YES																						1
193	NO																						
194	Not Sure			1							1		1	1									
195	Not Applicable/No response	1																					
196																							
197																							
198	What are the primary functions of this contact database?																						
199	Contact database	1	1	1	1	1	1	1	1	1	1	1	1	1	1	1		1	1	1	1	1	1
200	Keep mailing lists		1			1		1	1	1	1	1	1		1	1				1	1	1	1
201	Announce events		1			1		1	1			1				1		1		1		1	1
202	Artists registry	1	1	1		1		1		1	1	1		1	1	1			1	1	1	1	1
203	Cultural survey		1					1	1	1	1	1			1				1	1		1	1
204	Grants management			1		1		1	1	1	1	1	1	1	1	1		1		1		1	1
205	Fieldwork management							1	1	1	1	1			1				1	1	1	1	1
206	Archival Finding Aid																						
207	No response																						1
208																							

	A	X	Y	Z	AA	AB	AC	AD	AE	AF	AG	AH	AI	AJ	AK	AL	AM	AN	AO	AP	AQ	AR	AS	AT	AU
1	Name of Organization	Kentucky Folklife Program	CCA/Trinidad State Jr. College	Vermont Folklife Center	WA State Arts Commission	Institute for Cultural Partnerships	Iowa Arts Council	Wisconsin Arts Board	South Georgia Folklife	Wyoming Arts Council	American Folklife Center	Maryland Folklife Program	Colorado Folk Arts Program	SC Arts Commission	Center for Southern Folklife	Conn. Cultural Heritage Arts	New Mexico Arts	LA County Arts Comission	Maine Folklife Center	Folklife Center--Inter. House	Traditional Arts Indiana	Georgia Folklife Prog.	Totals	Percentage	
191	Would your program be in a position to contribute financially to the development of an MS Access-based, Pearl-compatible database application to be shared among folk arts programs?																								
192	YES										1												1	4.5%	
193	NO																						1	4.5%	
194	Not Sure						1							1									7	31.8%	
195	Not Applicable/No response			1	1	1	1		1	1		1	1		1	1	1	1					13	59.1%	
196																							22	100.00%	
197																									
198	What are the primary functions of this contact database?																								
199	Contact database	1	1		1	1	1	1	1	1			1	1	1	1	1	1		1	1	1	37	22.2%	
200	Keep mailing lists	1	1		1	1	1			1			1	1	1	1	1	1					26	15.6%	
201	Announce events	1				1		1	1				1	1	1		1	1		1	1		20	12.0%	
202	Artists registry	1	1		1	1	1	1	1				1			1	1	1			1		27	16.2%	
203	Cultural survey	1			1	1	1						1	1	1	1	1				1		19	11.4%	
204	Grants management					1			1					1			1	1				1	18	10.8%	
205	Fieldwork management	1			1	1	1		1								1				1		17	10.2%	
206	Archival Finding Aid																						0	0.0%	
207	No response			1							1												3	1.8%	
208																							167	100.00%	

	A	B	C	D	E	F	G	H	I	J	K	L	M	N	O	P	Q	R	S	T	U	V	W
1	Name of Organization	New York Folklore Society	Utah Folk Arts Program	WESTAF	Tennessee Folklife Program	Virginia Folklife Program	DC Commission--Folk Arts	Nevada Folk Arts Program	Hallockville Folklife Center--NY	Oregon Folklife Program	Massachusetts Cultural Council	Montana Folklife Program	RI Folk Arts Program	Louisiana Folklife Program	Florida Folklife Program	Mississippi Arts Commission	Haffenreffer Museum--Brown Univ.	Western Folklife Center	Florida Folklife Program	North Dakota Endowment on Arts	South Dakota Arts Council	ACTA--Fresno Arts Council	Alabama Folklife Program
209	What kinds of contacts do you keep in your contact database?																						
210	Artists/Performers	1	1	1	1	1		1	1	1	1	1	1	1	1			1	1	1	1	1	1
211	Arts Agencies		1	1	1	1		1		1		1	1	1			1	1		1	1	1	1
212	Panel members		1		1	1				1	1	1	1			1		1		1		1	1
213	Board members		1	1	1	1			1		1		1	1		1		1		1		1	1
214	Legislators		1	1		1			1		1			1		1		1				1	1
215	City Council members		1	1		1			1		1						1					1	1
216	Interested parties (spectators)	1	1	1	1	1			1	1	1		1	1		1		1				1	1
217	Galleries	1	1	1	1	1				1		1		1		1						1	1
218	Venues	1	1		1	1				1		1				1		1		1		1	1
219	Schools (K-12, secondary, colleges)	1	1			1		1	1	1				1		1		1		1		1	1
220	Arts Associations	1	1	1	1	1		1		1	1			1		1		1		1	1	1	1
221	Guilds		1						1	1				1		1				1	1	1	1
222	Theatres		1	1												1							
223	Libraries		1	1		1					1			1		1		1				1	1
224	Sr. Centers		1											1			1					1	1
225	Media/News contacts		1	1		1			1	1				1		1		1				1	1
226	Nonprofit Orgs		1	1	1	1		1	1	1	1			1		1				1	1	1	1
227	Presenters	1	1	1	1	1		1	1	1	1			1	1	1		1		1		1	1
228	Scholars	1	1							1					1								
229	Ethnic Organizations	1	1			1				1					1	1						1	1
230	No response																						1
231																							

	A	X	Y	Z	AA	AB	AC	AD	AE	AF	AG	AH	AI	AJ	AK	AL	AM	AN	AO	AP	AQ	AR	AS	AT	AU
1	Name of Organization	Kentucky Folklife Program	CCA/Trinidad State Jr. College	Vermont Folklife Center	WA State Arts Commission	Institute for Cultural Partnerships	Iowa Arts Council	Wisconsin Arts Board	South Georgia Folklife	Wyoming Arts Council	American Folklife Center	Maryland Folklife Program	Colorado Folk Arts Program	SC Arts Commission	Center for Southern Folklife	Conn. Cultural Heritage Arts	New Mexico Arts	LA County Arts Commission	Maine Folklife Center	Folklife Center--Inter. House	Traditional Arts Indiana	Georgia Folklife Prog.	Totals	Percentage	
209	What kinds of contacts do you keep in your contact database?																								
210	Artists/Performers	1	1		1	1	1	1	1	1		1	1	1	1	1	1	1		1	1	1	37	10.1%	
211	Arts Agencies				1	1			1	1		1	1	1			1	1		1	1	1	26	7.1%	
212	Panel members	1			1	1				1		1	1	1			1	1				1	20	5.5%	
213	Board members	1			1	1				1				1	1		1				1		20	5.5%	
214	Legislators	1			1					1				1			1						14	3.8%	
215	City Council members									1						1							9	2.5%	
216	Interested parties (spectators)	1			1				1	1	1	1	1	1		1			1	1	1	1	23	6.3%	
217	Galleries				1	1				1		1	1	1		1	1						18	4.9%	
218	Venues				1	1						1	1	1		1	1				1	1	19	5.2%	
219	Schools (K-12, secondary, colleges)					1			1	1		1	1	1		1					1		19	5.2%	
220	Arts Associations		1			1			1	1		1	1	1		1	1				1	1	25	6.8%	
221	Guilds					1				1		1	1	1		1							14	3.8%	
222	Theatres									1		1		1		1	1						8	2.2%	
223	Libraries					1			1	1		1	1	1			1						15	4.1%	
224	Sr. Centers					1						1	1	1									8	2.2%	
225	Media/News contacts	1				1			1	1			1	1	1		1	1		1	1	1	21	5.8%	
226	Nonprofit Orgs					1	1	1		1		1	1	1		1	1		1	1		1	23	6.3%	
227	Presenters	1				1			1			1	1	1		1	1		1	1		1	26	7.1%	
228	Scholars						1					1	1										6	1.6%	
229	Ethnic Organizations						1					1								1	1		11	3.0%	
230	No response			1							1												3	0.8%	
231																							365	100.00%	

	A	B	C	D	E	F	G	H	I	J	K	L	M	N	O	P	Q	R	S	T	U	V	W
1	Name of Organization	New York Folklore Society	Utah Folk Arts Program	WESTAF	Tennessee Folklife Program	Virginia Folklife Program	DC Commission--Folk Arts	Nevada Folk Arts Program	Hallockville Folklife Center--NY	Oregon Folklife Program	Massachusetts Cultural Council	Montana Folklife Program	RI Folk Arts Program	Louisiana Folklife Program	Florida Folklife Program	Mississippi Arts Commission	Haffenreffer Museum--Brown Univ.	Western Folklife Center	Florida Folklife Program	North Dakota Endowment on Arts	South Dakota Arts Council	ACTA--Fresno Arts Council	Alabama Folklife Program
232	What kind of information (fields) do you keep on your contacts?																						
233	Name	1	1	1	1	1		1	1	1	1	1	1	1	1	1		1	1	1	1	1	1
234	Address	1	1	1	1	1		1	1	1	1	1	1	1	1	1		1	1	1	1	1	1
235	Phone	1	1	1	1	1		1	1	1	1	1	1	1	1	1		1	1	1	1	1	1
236	Ethnicity	1	1	1				1	1	1	1	1	1	1	1	1			1	1	1	1	1
237	Nationality	1	1	1						1	1	1			1				1	1		1	
238	Relations within the region			1																			
239	Participation in grants/funding		1	1		1		1	1	1	1	1	1	1	1	1		1	1	1	1	1	1
240	Participation in outreach		1	1		1		1	1	1					1			1	1				
241	Participation in events		1	1		1		1	1	1					1			1	1				
242	Awards		1	1							1		1	1	1	1		1	1				1
243	Kind of artist/performer	1	1	1		1		1	1	1	1	1	1	1	1	1		1	1	1	1	1	1
244	Notes on the artist	1	1	1		1		1	1	1	1	1	1	1	1			1	1	1	1	1	1
245	Email		1		1														1				
246	No response																						
247																							
248																							
249																							
	Do you implement any policies with regard to access, privacy, or consent for the contact database?																						
250																							
251	YES		1	1					1	1	1	1		1	1					1			1
252	NO				1	1		1					1						1		1		
253	Not Sure																						
254	No response	1														1		1				1	
255																							

	A	X	Y	Z	AA	AB	AC	AD	AE	AF	AG	AH	AI	AJ	AK	AL	AM	AN	AO	AP	AQ	AR	AS	AT	AU
1	Name of Organization	Kentucky Folklife Program	CCA/Trinidad State Jr. College	Vermont Folklife Center	WA State Arts Commission	Institute for Cultural Partnerships	Iowa Arts Council	Wisconsin Arts Board	South Georgia Folklife	Wyoming Arts Council	American Folklife Center	Maryland Folklife Program	Colorado Folk Arts Program	SC Arts Commission	Center for Southern Folklore	Conn. Cultural Heritage Arts	New Mexico Arts	LA County Arts Commission	Maine Folklife Center	Folklife Center--Inter. House	Traditional Arts Indiana	Georgia Folklife Prog.	Totals	Percentage	
232	What kind of information (fields) do you keep on your contacts?																								
233	Name	1	1		1	1	1	1	1	1		1	1	1	1	1	1	1	1	1	1	1	1	38	12.4%
234	Address	1	1		1	1	1	1	1	1		1	1	1	1	1	1	1	1	1	1	1	1	38	12.4%
235	Phone	1	1		1	1	1	1	1	1		1	1	1	1	1	1	1	1	1	1	1	1	38	12.4%
236	Ethnicity	1			1	1	1	1	1				1	1		1	1			1	1			28	9.2%
237	Nationality	1			1	1	1						1											15	4.9%
238	Relations within the region	1			1	1							1											5	1.6%
239	Participation in grants/funding	1			1	1							1	1			1						1	24	7.8%
240	Participation in outreach	1						1					1	1						1				15	4.9%
241	Participation in events				1	1	1	1					1	1						1	1			17	5.6%
242	Awards				1	1							1	1			1							15	4.9%
243	Kind of artist/performer	1			1	1	1	1	1			1	1	1	1	1	1			1	1	1		34	11.1%
244	Notes on the artist	1	1		1	1	1	1	1			1	1	1	1		1			1	1			31	10.1%
245	Email	1				1														1				6	2.0%
246	No response			1							1													2	0.7%
247																								306	100.00%
248																									
249																									
	Do you implement any policies with regard to access, privacy, or consent for the contact database?																								
250																									
251	YES	1				1	1	1				1	1			1				1	1			19	47.5%
252	NO		1		1					1					1		1	1						12	30.0%
253	Not Sure																							0	0.0%
254	No response			1					1		1			1								1		9	22.5%
255																								40	100.00%

	A	B	C	D	E	F	G	H	I	J	K	L	M	N	O	P	Q	R	S	T	U	V	W
1	Name of Organization	New York Folklore Society	Utah Folk Arts Program	WESTAF	Tennessee Folklife Program	Virginia Folklife Program	DC Commission--Folk Arts	Nevada Folk Arts Program	Hallockville Folklife Center--NY	Oregon Folklife Program	Massachusetts Cultural Council	Montana Folklife Program	RI Folk Arts Program	Louisiana Folklife Program	Florida Folklife Program	Mississippi Arts Commission	Haffenreffer Museum--Brown Univ.	Western Folklife Center	Florida Folklife Program	North Dakota Endowment on Arts	South Dakota Arts Council	ACTA--Fresno Arts Council	Alabama Folklife Program
256	Is a mailing list of your contact database readily available to other/any agencies, companies, or individuals?																						
257	YES		1	1							1	1	1	1		1				1			1
258	NO				1	1		1	1	1					1		1	1	1			1	1
259	Not Sure																						
260	No response	1																					
261																							
262	Do you keep an archival database for collections?																						
263	YES		1					1	1	1	1			1	1		1	1					1
264	NO	1		1	1	1	1					1	1		1			1	1	1	1		1
265	Not Sure																						
266	No response																						
267																							
268																							
269	How long has your organization kept a collections database?																						
270	1-5 years							1		1	1							1					
271	6-8 years		1														1						
272	9-12 years																						
273	13-15 years								1					1									
274	16-20 years																						
275	over 20 years																						
276	No response	1																					
277																							

	A	X	Y	Z	AA	AB	AC	AD	AE	AF	AG	AH	AI	AJ	AK	AL	AM	AN	AO	AP	AQ	AR	AS	AT	AU
1	Name of Organization	Kentucky Folklife Program	CCA/Trinidad State Jr. College	Vermont Folklife Center	WA State Arts Commission	Institute for Cultural Partnerships	Iowa Arts Council	Wisconsin Arts Board	South Georgia Folklife	Wyoming Arts Council	American Folklife Center	Maryland Folklife Program	Colorado Folk Arts Program	SC Arts Commission	Center for Southern Folklore	Conn. Cultural Heritage Arts	New Mexico Arts	LA County Arts Comission	Maine Folklife Center	Folklife Center--Inter. House	Traditional Arts Indiana	Georgia Folklife Prog.	Totals	Percentage	
256	Is a mailing list of your contact database readily available to other/any agencies, companies, or individuals?						1	1		1				1		1		1		1		1	17	41.5%	
257	YES						1	1		1				1		1		1		1		1	17	41.5%	
258	NO	1			1	1			1		1	1	1				1				1		20	48.8%	
259	Not Sure		1											1									2	4.9%	
260	No response			1																			2	4.9%	
261																							41	100.00%	
262	Do you keep an archival database for collections?																								
263	YES	1	1	1	1	1	1				1	1	1				1		1				1	22	51.2%
264	NO							1	1	1				1	1	1		1		1	1			21	48.8%
265	Not Sure																							0	0.0%
266	No response																							0	0.0%
267																								43	100.00%
268																									
269	How long has your organization kept a collections database?																								
270	1-5 years	1				1	1					1							1					9	30.0%
271	6-8 years				1												1							4	13.3%
272	9-12 years		1	1							1		1											4	13.3%
273	13-15 years																					1	3	10.0%	
274	16-20 years																							0	0.0%
275	over 20 years																							0	0.0%
276	No response						1	1	1					1	1	1								10	33.3%
277																								30	100.00%

	A	B	C	D	E	F	G	H	I	J	K	L	M	N	O	P	Q	R	S	T	U	V	W
1	Name of Organization	New York Folklore Society	Utah Folk Arts Program	WESTAF	Tennessee Folklife Program	Virginia Folklife Program	DC Commission--Folk Arts	Nevada Folk Arts Program	Hallockville Folklife Center--NY	Oregon Folklife Program	Massachusetts Cultural Council	Montana Folklife Program	RI Folk Arts Program	Louisiana Folklife Program	Florida Folklife Program	Mississippi Arts Commission	Haffenreffer Museum--Brown Univ.	Western Folklife Center	Florida Folklife Program	North Dakota Endowment on Arts	South Dakota Arts Council	ACTA--Fresno Arts Council	Alabama Folklife Program
278	How many collection records do you have in your database?																						
279	Less than 500									1	1			1									
280	501-1500														1								
281	1501-2500	1																					
282	2501-3500																						
283	3501-5000							1															
284	5001-7500																						
285	7501-10,000																						
286	Over 10,000							1									1						
287	No response	1										1						1				1	
288																							
289																							
290																							

	A	X	Y	Z	AA	AB	AC	AD	AE	AF	AG	AH	AI	AJ	AK	AL	AM	AN	AO	AP	AQ	AR	AS	AT	AU
1	Name of Organization	Kentucky Folklife Program	CCA/Trinidad State Jr. College	Vermont Folklife Center	WA State Arts Commission	Institute for Cultural Partnerships	Iowa Arts Council	Wisconsin Arts Board	South Georgia Folklife	Wyoming Arts Council	American Folklife Center	Maryland Folklife Program	Colorado Folk Arts Program	SC Arts Commission	Center for Southern Folklore	Conn. Cultural Heritage Arts	New Mexico Arts	LA County Arts Comission	Maine Folklife Center	Folklife Center--Inter. House	Traditional Arts Indiana	Georgia Folklife Prog.	Totals	Percentage	
278	How many collection records do you have in your database?																								
279	Less than 500	1				1																	1	6	20.0%
280	501-1500					1						1												3	10.0%
281	1501-2500												1											2	6.7%
282	2501-3500				1						1					1								3	10.0%
283	3501-5000		1																					2	6.7%
284	5001-7500																							0	0.0%
285	7501-10,000																							0	0.0%
286	Over 10,000																			1				3	10.0%
287	No response	1					1	1	1					1	1	1								11	36.7%
288																								30	100.00%
289																									
290																									

	A	B	C	D	E	F	G	H	I	J	K	L	M	N	O	P	Q	R	S	T	U	V	W
1	Name of Organization	New York Folklore Society	Utah Folk Arts Program	WESTAF	Tennessee Folklife Program	Virginia Folklife Program	DC Commission--Folk Arts	Nevada Folk Arts Program	Hallockville Folklife Center--NY	Oregon Folklife Program	Massachusetts Cultural Council	Montana Folklife Program	RI Folk Arts Program	Louisiana Folklife Program	Florida Folklife Program	Mississippi Arts Commission	Haffenreffer Museum--Brown Univ.	Western Folklife Center	Florida Folklife Program	North Dakota Endowment on Arts	South Dakota Arts Council	ACTA--Fresno Arts Council	Alabama Folklife Program
	What kind of database are you using at the moment for the archives?																						
291																							
292	Pearl										1												
293	MS Access			1						1				1	1								
294	MS Excell																						
295	Paradox																						
296	Filemaker Pro	1						1										1					
297	Goldmine																						
298	Dbase																						
299	Argus--Questor																1						
300	Past Perfect								1														
301	ACT																						
302	Contact Plus																						
303	MS Outlook																						
304	AskSam																						
305	No response	1										1										1	
306																							
	Does this database software have concurrent usability?																						
307																							
308	YES		1		1					1	1				1		1	1					
309	NO							1	1					1									
310	Not Sure																						
311	No response	1										1										1	
312																							

	A	X	Y	Z	AA	AB	AC	AD	AE	AF	AG	AH	AI	AJ	AK	AL	AM	AN	AO	AP	AQ	AR	AS	AT	AU
1	Name of Organization	Kentucky Folklife Program	CCA/Trinidad State Jr. College	Vermont Folklife Center	WA State Arts Commission	Institute for Cultural Partnerships	Iowa Arts Council	Wisconsin Arts Board	South Georgia Folklife	Wyoming Arts Council	American Folklife Center	Maryland Folklife Program	Colorado Folk Arts Program	SC Arts Commission	Center for Southern Folklore	Conn. Cultural Heritage Arts	New Mexico Arts	LA County Arts Comission	Maine Folklife Center	Folklife Center--Inter. House	Traditional Arts Indiana	Georgia Folklife Prog.	Totals	Percentage	
291	What kind of database are you using at the moment for the archives?																								
292	Pearl																						1	2.9%	
293	MS Access	1	1	1	1	1	1					1					1						12	35.3%	
294	MS Excell			1																		1	2	5.9%	
295	Paradox			1																			1	2.9%	
296	Filemaker Pro				1								1						1				6	17.6%	
297	Goldmine																						0	0.0%	
298	Dbase																						0	0.0%	
299	Argus--Questor																						1	2.9%	
300	Past Perfect																						1	2.9%	
301	ACT																						0	0.0%	
302	Contact Plus																						0	0.0%	
303	MS Outlook																						0	0.0%	
304	AskSam										1												1	2.9%	
305	No response							1	1	1				1	1	1							9	26.5%	
306																							34	100.00%	
307	Does this database software have concurrent usability?																								
308	YES		1		1	1	1				1												12	38.7%	
309	NO			1													1		1				6	19.4%	
310	Not Sure	1											1									1	3	9.7%	
311	No response							1	1	1		1		1	1	1							10	32.3%	
312																							31	100.00%	

	A	B	C	D	E	F	G	H	I	J	K	L	M	N	O	P	Q	R	S	T	U	V	W
1	Name of Organization	New York Folklore Society	Utah Folk Arts Program	WESTAF	Tennessee Folklife Program	Virginia Folklife Program	DC Commission--Folk Arts	Nevada Folk Arts Program	Hallockville Folklife Center--NY	Oregon Folklife Program	Massachusetts Cultural Council	Montana Folklife Program	RI Folk Arts Program	Louisiana Folklife Program	Florida Folklife Program	Mississippi Arts Commission	Haffenreffer Museum--Brown Univ.	Western Folklife Center	Florida Folklife Program	North Dakota Endowment on Arts	South Dakota Arts Council	ACTA--Fresno Arts Council	Alabama Folklife Program
313	What forms of AUDIO media does the archive contain?																						
314	Cassette		1				1		1	1	1		1	1	1		1					1	
315	Vinyl LPs	1		1								1		1	1			1					
316	DAT tapes	1								1	1				1			1				1	
317	Compact Discs	1								1													
318	Minidiscs														1	1							
319	8-track tapes																						
320	Reel to reel tape	1						1				1		1	1			1					
321	wax cylinders																	1					
322	No response	1															1						
323																							
324	What forms of VIDEO media does the archive contain?																						
325	NTSC VHS video		1		1					1	1	1			1	1		1					
326	PAL VHS video														1								
327	SECAM VHS video														1								
328	Super VHS														1								
329	Beta video	1						1		1					1			1				1	
330	Hi 8 video							1			1	1			1			1				1	
331	Digital video														1			1				1	
332	Super 8 film							1							1								
333	16 mm film														1			1					
334	Open reel videos																						
335	No response	1												1			1						
336																							

	A	X	Y	Z	AA	AB	AC	AD	AE	AF	AG	AH	AI	AJ	AK	AL	AM	AN	AO	AP	AQ	AR	AS	AT	AU
1	Name of Organization	Kentucky Folklife Program	CCA/Trinidad State Jr. College	Vermont Folklife Center	WA State Arts Commission	Institute for Cultural Partnerships	Iowa Arts Council	Wisconsin Arts Board	South Georgia Folklife	Wyoming Arts Council	American Folklife Center	Maryland Folklife Program	Colorado Folk Arts Program	SC Arts Commission	Center for Southern Folklore	Conn. Cultural Heritage Arts	New Mexico Arts	LA County Arts Commission	Maine Folklife Center	Folklife Center--Inter. House	Traditional Arts Indiana	Georgia Folklife Prog.	Totals	Percentage	
313	What forms of AUDIO media does the archive contain?																								
314	Cassette	1	1	1	1	1	1		1	1	1	1	1		1				1				1	24	29.3%
315	Vinyl LPs		1						1	1	1				1				1					12	14.6%
316	DAT tapes	1		1	1	1	1		1	1		1			1							1	16	19.5%	
317	Compact Discs								1															3	3.7%
318	Minidiscs		1																					3	3.7%
319	8-track tapes									1														1	1.2%
320	Reel to reel tape		1		1	1		1	1	1	1	1							1					14	17.1%
321	wax cylinders									1														2	2.4%
322	No response						1		1					1	1		1							7	8.5%
323																								82	100.00%
324	What forms of VIDEO media does the archive contain?																								
325	NTSC VHS video		1	1	1	1		1	1	1	1		1					1						18	25.4%
326	PAL VHS video									1														2	2.8%
327	SECAM VHS video																							1	1.4%
328	Super VHS	1																						2	2.8%
329	Beta video	1	1							1		1							1					11	15.5%
330	Hi 8 video	1	1	1						1		1		1										12	16.9%
331	Digital video		1	1				1		1														7	9.9%
332	Super 8 film									1		1												4	5.6%
333	16 mm film									1														3	4.2%
334	Open reel videos									1														1	1.4%
335	No response		1				1		1					1	1		1					1		10	14.1%
336																								71	100.00%

	A	B	C	D	E	F	G	H	I	J	K	L	M	N	O	P	Q	R	S	T	U	V	W
1	Name of Organization	New York Folklore Society	Utah Folk Arts Program	WESTAF	Tennessee Folklife Program	Virginia Folklife Program	DC Commission--Folk Arts	Nevada Folk Arts Program	Hallockville Folklife Center--NY	Oregon Folklife Program	Massachusetts Cultural Council	Montana Folklife Program	RI Folk Arts Program	Louisiana Folklife Program	Florida Folklife Program	Mississippi Arts Commission	Haffenreffer Museum--Brown Univ.	Western Folklife Center	Florida Folklife Program	North Dakota Endowment on Arts	South Dakota Arts Council	ACTA--Fresno Arts Council	Alabama Folklife Program
337	What forms of STILL IMAGES media does the archive contain?																						
338	Black and white photos		1		1			1	1	1	1	1		1	1	1	1	1					1
339	Black and white negatives		1		1			1	1	1	1	1		1	1	1	1	1					1
340	Color photos		1		1			1	1	1	1	1		1	1	1	1	1					1
341	Color negatives		1		1			1	1	1	1	1		1	1	1	1	1					1
342	Color slides		1		1			1	1	1	1	1		1	1	1	1	1					1
343	Digital stills		1							1				1	1	1	1	1					1
344	Glass plates														1								
345	Other																	1					
346	No response	1																					
347																							
348																							
349																							

	A	X	Y	Z	AA	AB	AC	AD	AE	AF	AG	AH	AI	AJ	AK	AL	AM	AN	AO	AP	AQ	AR	AS	AT	AU
1	Name of Organization	Kentucky Folklife Program	CCA/Trinidad State Jr. College	Vermont Folklife Center	WA State Arts Commission	Institute for Cultural Partnerships	Iowa Arts Council	Wisconsin Arts Board	South Georgia Folklife	Wyoming Arts Council	American Folklife Center	Maryland Folklife Program	Colorado Folk Arts Program	SC Arts Commission	Center for Southern Folklore	Conn. Cultural Heritage Arts	New Mexico Arts	LA County Arts Comission	Maine Folklife Center	Folklife Center--Inter. House	Traditional Arts Indiana	Georgia Folklife Prog.	Totals	Percentage	
337	What forms of STILL IMAGES media does the archive contain?																								
338	Black and white photos	1		1	1	1	1		1		1		1			1	1		1				1	25	16.9%
339	Black and white negatives	1		1	1	1	1		1		1		1			1	1		1				1	25	16.9%
340	Color photos	1	1	1	1	1	1		1		1		1			1			1					24	16.2%
341	Color negatives	1	1	1	1	1	1		1		1		1			1			1					24	16.2%
342	Color slides	1		1	1	1	1		1		1	1	1			1	1		1				1	26	17.6%
343	Digital stills	1		1	1		1				1		1			1			1					16	10.8%
344	Glass plates										1													2	1.4%
345	Other																							1	0.7%
346	No response							1		1				1	1									5	3.4%
347																								148	100.00%
348																									
349																									

	A	B	C	D	E	F	G	H	I	J	K	L	M	N	O	P	Q	R	S	T	U	V	W	
1	Name of Organization	New York Folklore Society	Utah Folk Arts Program	WESTAF	Tennessee Folklife Program	Virginia Folklife Program	DC Commission--Folk Arts	Nevada Folk Arts Program	Hallockville Folklife Center--NY	Oregon Folklife Program	Massachusetts Cultural Council	Montana Folklife Program	RI Folk Arts Program	Louisiana Folklife Program	Florida Folklife Program	Mississippi Arts Commission	Haffenreffer Museum--Brown Univ.	Western Folklife Center	Florida Folklife Program	North Dakota Endowment on Arts	South Dakota Arts Council	ACTA--Fresno Arts Council	Alabama Folklife Program	
350	What OTHER forms of media does the archive contain?																							
351	Not Applicable																							
352	Artifacts	1						1	1	1					1	1		1	1					
353	State Folk Arts Collection	1													1									
354	Student papers on fieldwork								1						1									
355	Fieldnotes	1						1						1	1									
356	Newspaper articles			1				1	1	1	1	1		1	1			1					1	
357	Books	1		1				1	1	1	1	1						1					1	
358	Journal articles	1		1				1	1	1	1	1						1				1		1
359	Brochures and pamphlets	1		1				1	1	1	1	1		1	1			1					1	
360	Fieldwork documentation	1						1						1										
361	Dissertations																							
362	Transcripts	1						1																
363	Ephemera	1		1																				
364	No response	1																						
365																								

	A	X	Y	Z	AA	AB	AC	AD	AE	AF	AG	AH	AI	AJ	AK	AL	AM	AN	AO	AP	AQ	AR	AS	AT	AU
1	Name of Organization	Kentucky Folklife Program	CCA/Trinidad State Jr. College	Vermont Folklife Center	WA State Arts Commission	Institute for Cultural Partnerships	Iowa Arts Council	Wisconsin Arts Board	South Georgia Folklife	Wyoming Arts Council	American Folklife Center	Maryland Folklife Program	Colorado Folk Arts Program	SC Arts Commission	Center for Southern Folklore	Conn. Cultural Heritage Arts	New Mexico Arts	LA County Arts Comission	Maine Folklife Center	Folklife Center--Inter. House	Traditional Arts Indiana	Georgia Folklife Prog.	Totals	Percentage	
350	What OTHER forms of media does the archive contain?																								
351	Not Applicable																					2	1.3%		
352	Artifacts	1	1		1	1				1	1			1										15	9.9%
353	State Folk Arts Collection	1				1																		4	2.6%
354	Student papers on fieldwork	1	1	1		1		1		1			1						1					10	6.6%
355	Fieldnotes		1			1		1		1			1						1			1		11	7.3%
356	Newspaper articles	1	1	1	1	1	1		1	1	1	1	1			1								21	13.9%
357	Books	1	1	1	1	1	1		1	1	1	1	1			1			1					19	12.6%
358	Journal articles	1	1	1	1	1				1			1		1				1					16	10.6%
359	Brochures and pamphlets		1	1	1	1		1		1	1	1			1				1			1		23	15.2%
360	Fieldwork documentation	1		1			1				1		1						1			1		10	6.6%
361	Dissertations			1																				1	0.7%
362	Transcripts			1		1					1		1						1			1		8	5.3%
363	Ephemera			1							1	1	1			1								7	4.6%
364	No response							1		1							1							4	2.6%
365																						151	100.00%		

	A	B	C	D	E	F	G	H	I	J	K	L	M	N	O	P	Q	R	S	T	U	V	W
1	Name of Organization	New York Folklore Society	Utah Folk Arts Program	WESTAF	Tennessee Folklife Program	Virginia Folklife Program	DC Commission--Folk Arts	Nevada Folk Arts Program	Hallockville Folklife Center--NY	Oregon Folklife Program	Massachusetts Cultural Council	Montana Folklife Program	RI Folk Arts Program	Louisiana Folklife Program	Florida Folklife Program	Mississippi Arts Commission	Haffenreffer Museum--Brown Univ.	Western Folklife Center	Florida Folklife Program	North Dakota Endowment on Arts	South Dakota Arts Council	ACTA--Fresno Arts Council	Alabama Folklife Program
366	Do you also keep a database of text-based materials (digitized documents)?																						
367	YES				1																		
368	NO		1	1		1		1	1	1	1	1	1	1	1	1	1	1	1	1	1	1	1
369	Not Sure																						
370	No response	1																					
371																							
372	What software application to you use for your text-based database?																						
373	AskSam																						
374	Citation																						
375	EndNote				1																		
376	Filemaker Pro																						
377	Nota Bene																						
378	Not Applicable/No response	1	1			1		1	1	1	1	1		1	1		1	1			1	1	
379																							
380																							

	A	X	Y	Z	AA	AB	AC	AD	AE	AF	AG	AH	AI	AJ	AK	AL	AM	AN	AO	AP	AQ	AR	AS	AT	AU
1	Name of Organization	Kentucky Folklife Program	CCA/Trinidad State Jr. College	Vermont Folklife Center	WA State Arts Commission	Institute for Cultural Partnerships	Iowa Arts Council	Wisconsin Arts Board	South Georgia Folklife	Wyoming Arts Council	American Folklife Center	Maryland Folklife Program	Colorado Folk Arts Program	SC Arts Commission	Center for Southern Folklore	Conn. Cultural Heritage Arts	New Mexico Arts	LA County Arts Comission	Maine Folklife Center	Folklife Center--Inter. House	Traditional Arts Indiana	Georgia Folklife Prog.	Totals	Percentage	
366	Do you also keep a database of text-based materials (digitized documents)?										1														
367	YES																						2	4.8%	
368	NO	1	1	1	1	1	1	1	1	1		1	1		1	1	1	1	1	1	1	1	37	88.1%	
369	Not Sure	1																					1	2.4%	
370	No response													1									2	4.8%	
371																							42	100.00%	
372																									
	What software application to you use for your text-based database?																								
373																									
374	AskSam										1												1	3.1%	
375	Citation																						0	0.0%	
376	EndNote																						1	3.1%	
377	Filemaker Pro																						0	0.0%	
378	Nota Bene																						0	0.0%	
379	Not Applicable/No response	1	1	1	1	1	1	1	1	1		1	1	1	1	1	1	1	1				30	93.8%	
380																							32	100.00%	

	A	B	C	D	E	F	G	H	I	J	K	L	M	N	O	P	Q	R	S	T	U	V	W
1	Name of Organization	New York Folklore Society	Utah Folk Arts Program	WESTAF	Tennessee Folklife Program	Virginia Folklife Program	DC Commission--Folk Arts	Nevada Folk Arts Program	Hallockville Folklife Center--NY	Oregon Folklife Program	Massachusetts Cultural Council	Montana Folklife Program	RI Folk Arts Program	Louisiana Folklife Program	Florida Folklife Program	Mississippi Arts Commission	Haffenreffer Museum--Brown Univ.	Western Folklife Center	Florida Folklife Program	North Dakota Endowment on Arts	South Dakota Arts Council	ACTA--Fresno Arts Council	Alabama Folklife Program
381	What issues in nomenclature are frustrating to you with your databases?																						
382	Don't have any issues in this area, my system works well.									1							1						
383	My issues center around developing genre fields.				1						1	1										1	
384	My issues center around how to classify an item/object/artist/etc. which may fall within several different genre classifications.						1	1				1		1							1	1	
385	I have a huge miscellaneous classification and don't know what to do with it.								1														
386	No standard controlled vocabulary for folklife materials.				1													1					
387	No time for data entry		1																				
388	No response	1		1									1		1	1							
389																							
390																							
391	Are you aware of the Ethnographic Thesaurus Initiative being undertaken by the American Folklife Center?																						
392	YES	1	1		1			1	1		1	1		1	1			1	1		1	1	
393	NO			1		1	1			1			1			1	1			1			1
394	Not Sure																						
395	No response																						
396																							

	A	X	Y	Z	AA	AB	AC	AD	AE	AF	AG	AH	AI	AJ	AK	AL	AM	AN	AO	AP	AQ	AR	AS	AT	AU
1	Name of Organization	Kentucky Folklife Program	CCA/Trinidad State Jr. College	Vermont Folklife Center	WA State Arts Commission	Institute for Cultural Partnerships	Iowa Arts Council	Wisconsin Arts Board	South Georgia Folklife	Wyoming Arts Council	American Folklife Center	Maryland Folklife Program	Colorado Folk Arts Program	SC Arts Commission	Center for Southern Folklife	Conn. Cultural Heritage Arts	New Mexico Arts	LA County Arts Commission	Maine Folklife Center	Folklife Center--Inter. House	Traditional Arts Indiana	Georgia Folklife Prog.	Totals	Percentage	
381	What issues in nomenclature are frustrating to you with your databases?																		1				3	6.0%	
382	Don't have any issues in this area, my system works well.																								
383	My issues center around developing genre fields.	1			1				1		1											1	1	10	20.0%
384	My issues center around how to classify an item/object/artist/etc. which may fall within several different genre classifications.	1	1	1	1	1			1		1		1			1	1							16	32.0%
385	I have a huge miscellaneous classification and don't know what to do with it.																							1	2.0%
386	No standard controlled vocabulary for folklife materials.	1		1							1					1								6	12.0%
387	No time for data entry												1											2	4.0%
388	No response						1	1		1				1	1			1		1				12	24.0%
389																								50	100.00%
390																									
391	Are you aware of the Ethnographic Thesaurus Initiative being undertaken by the American Folklife Center?																								
392	YES			1		1	1		1		1	1	1			1	1	1			1			24	55.8%
393	NO	1	1		1			1		1					1				1	1		1		18	41.9%
394	Not Sure																							0	0.0%
395	No response													1										1	2.3%
396																								43	100.00%

	A	B	C	D	E	F	G	H	I	J	K	L	M	N	O	P	Q	R	S	T	U	V	W
1	Name of Organization	New York Folklore Society	Utah Folk Arts Program	WESTAF	Tennessee Folklife Program	Virginia Folklife Program	DC Commission--Folk Arts	Nevada Folk Arts Program	Hallockville Folklife Center--NY	Oregon Folklife Program	Massachusetts Cultural Council	Montana Folklife Program	RI Folk Arts Program	Louisiana Folklife Program	Florida Folklife Program	Mississippi Arts Commission	Haffenreffer Museum--Brown Univ.	Western Folklife Center	Florida Folklife Program	North Dakota Endowment on Arts	South Dakota Arts Council	ACTA--Fresno Arts Council	Alabama Folklife Program
397	Would an Ethnographic Thesaurus be of any use to you in developing your collections database?																						
398	YES		1		1	1	1				1	1		1	1	1	1	1	1	1	1	1	1
399	NO								1														
400	Not Sure							1		1		1											
401	No response	1		1																			
402																							
403	Does your program currently maintain a website?																						
404	YES	1	1	1		1		1	1			1		1	1	1	1	1	1	1		1	1
405	NO						1						1								1		
406	We plan one in the near future				1					1	1												
407	Not Sure																						
408	No response																						
409																							
410																							
411	Have you made any database information accessible on the web?																						
412	YES			1			1							1									
413	NO	1	1		1	1			1	1		1	1		1	1	1	1	1	1	1		1
414	I foresee interest in immediate future							1			1	1										1	
415	Not Sure																						
416	No response																						
417																							

	A	X	Y	Z	AA	AB	AC	AD	AE	AF	AG	AH	AI	AJ	AK	AL	AM	AN	AO	AP	AQ	AR	AS	AT	AU
1	Name of Organization	Kentucky Folklife Program	CCA/Trinidad State Jr. College	Vermont Folklife Center	WA State Arts Commission	Institute for Cultural Partnerships	Iowa Arts Council	Wisconsin Arts Board	South Georgia Folklife	Wyoming Arts Council	American Folklife Center	Maryland Folklife Program	Colorado Folk Arts Program	SC Arts Commission	Center for Southern Folklore	Conn. Cultural Heritage Arts	New Mexico Arts	LA County Arts Commission	Maine Folklife Center	Folklife Center--Inter. House	Traditional Arts Indiana	Georgia Folklife Prog.	Totals	Percentage	
397	Would an Ethnographic Thesaurus be of any use to you in developing your collections database?																								
398	YES	1	1		1	1		1	1	1	1	1	1		1	1		1	1	1	1		30	69.8%	
399	NO																						1	2.3%	
400	Not Sure		1		1									1				1				1	8	18.6%	
401	No response						1							1									4	9.3%	
402																							43	100.00%	
403	Does your program currently maintain a website?																								
404	YES	1	1	1	1	1	1	1	1	1	1	1	1	1	1	1	1	1	1	1	1	1	37	86.0%	
405	NO																						3	7.0%	
406	We plan one in the near future																						3	7.0%	
407	Not Sure																						0	0.0%	
408	No response																						0	0.0%	
409																							43	100.00%	
410																									
411	Have you made any database information accessible on the web?																								
412	YES		1	1						1								1				1	8	17.8%	
413	NO	1			1		1	1	1		1	1		1			1			1	1		27	60.0%	
414	I foresee interest in immediate future					1			1				1	1	1				1				10	22.2%	
415	Not Sure																						0	0.0%	
416	No response																						0	0.0%	
417																							45	100.00%	

	A	B	C	D	E	F	G	H	I	J	K	L	M	N	O	P	Q	R	S	T	U	V	W
1	Name of Organization	New York Folklore Society	Utah Folk Arts Program	WESTAF	Tennessee Folklife Program	Virginia Folklife Program	DC Commission--Folk Arts	Nevada Folk Arts Program	Hallockville Folklife Center--NY	Oregon Folklife Program	Massachusetts Cultural Council	Montana Folklife Program	RI Folk Arts Program	Louisiana Folklife Program	Florida Folklife Program	Mississippi Arts Commission	Haffenreffer Museum--Brown Univ.	Western Folklife Center	Florida Folklife Program	North Dakota Endowment on Arts	South Dakota Arts Council	ACTA--Fresno Arts Council	Alabama Folklife Program
418	Would you be interested in the development of a web-based database that could be accessed from anywhere so that fieldworkers could enter data from anywhere?																						
419	YES		1	1			1	1	1		1	1	1	1								1	1
420	NO	1													1								
421	We are dev. something like this													1									
422	Not Sure				1	1				1						1	1	1	1	1	1		
423	No response																						
424																							
425																							
426																							

	A	X	Y	Z	AA	AB	AC	AD	AE	AF	AG	AH	AI	AJ	AK	AL	AM	AN	AO	AP	AQ	AR	AS	AT	AU
1	Name of Organization	Kentucky Folklife Program	CCA/Trinidad State Jr. College	Vermont Folklife Center	WA State Arts Commission	Institute for Cultural Partnerships	Iowa Arts Council	Wisconsin Arts Board	South Georgia Folklife	Wyoming Arts Council	American Folklife Center	Maryland Folklife Program	Colorado Folk Arts Program	SC Arts Commission	Center for Southern Folklore	Conn. Cultural Heritage Arts	New Mexico Arts	LA County Arts Comission	Maine Folklife Center	Folklife Center--Inter. House	Traditional Arts Indiana	Georgia Folklife Prog.	Totals	Percentage	
418	Would you be interested in the development of a web-based database that could be accessed from anywhere so that fieldworkers could enter data from anywhere?																								
419	YES	1	1	1	1						4	1	1			1		1			1		24	50.0%	
420	NO						1				1									1			5	10.4%	
421	We are dev. something like this																						1	2.1%	
422	Not Sure					1	1	1	1					1	1		1		1			1	18	37.5%	
423	No response																						0	0.0%	
424																							48	100.00%	
425																									
426																									

	A	B	C	D	E	F	G	H	I	J	K	L	M	N	O	P	Q	R	S	T	U	V	W
1	Name of Organization	New York Folklore Society	Utah Folk Arts Program	WESTAF	Tennessee Folklife Program	Virginia Folklife Program	DC Commission--Folk Arts	Nevada Folk Arts Program	Hallockville Folklife Center--NY	Oregon Folklife Program	Massachusetts Cultural Council	Montana Folklife Program	RI Folk Arts Program	Louisiana Folklife Program	Florida Folklife Program	Mississippi Arts Commission	Haffenreffer Museum--Brown Univ.	Western Folklife Center	Florida Folklife Program	North Dakota Endowment on Arts	South Dakota Arts Council	ACTA--Fresno Arts Council	Alabama Folklife Program
427	What kind of information would you foresee placing on the web?																						
428	An artist registry for public access	1	1		1		1	1	1			1		1	1								1
429	A sampling of our state collections	1	1		1			1	1		1	1				1			1			1	1
430	A sampling of our archival information		1		1			1	1	1	1	1				1		1	1			1	1
431	Our complete contact database																						
432	Our complete archival database																						
433	No database information at all, just information about our programs				1							1	1					1	1			1	
434	Educational materials		1												1								
435	Digital archives																						
436	Folklife curriculum materials														1								
437	Collection guides and finding aids		1																				
438	No response			1		1															1		
439																							

	A	X	Y	Z	AA	AB	AC	AD	AE	AF	AG	AH	AI	AJ	AK	AL	AM	AN	AO	AP	AQ	AR	AS	AT	AU
1	Name of Organization	Kentucky Folklife Program	CCA/Trinidad State Jr. College	Vermont Folklife Center	WA State Arts Commission	Institute for Cultural Partnerships	Iowa Arts Council	Wisconsin Arts Board	South Georgia Folklife	Wyoming Arts Council	American Folklife Center	Maryland Folklife Program	Colorado Folk Arts Program	SC Arts Commission	Center for Southern Folklore	Conn. Cultural Heritage Arts	New Mexico Arts	LA County Arts Comission	Maine Folklife Center	Folklife Center--Inter. House	Traditional Arts Indiana	Georgia Folklife Prog.	Totals	Percentage	
427	What kind of information would you foresee placing on the web?																								
428	An artist registry for public access	1	1			1	1	1	1			1	1			1	1	1			1	1	23	24.7%	
429	A sampling of our state collections	1	1	1	1				1			1					1						18	19.4%	
430	A sampling of our archival information	1	1	1	1	1			1			1	1		1	1			1				25	26.9%	
431	Our complete contact database																						0	0.0%	
432	Our complete archival database				1	1					1			1									4	4.3%	
433	No database information at all, just information about our programs								1			1								1			9	9.7%	
434	Educational materials			1			1												1				5	5.4%	
435	Digital archives			1							1												2	2.2%	
436	Folklife curriculum materials																						1	1.1%	
437	Collection guides and finding aids										1												2	2.2%	
438	No response													1									4	4.3%	
439																							93	100.00%	

	A	B	C	D	E	F	G	H	I	J	K	L	M	N	O	P	Q	R	S	T	U	V	W
1	Name of Organization	New York Folklore Society	Utah Folk Arts Program	WESTAF	Tennessee Folklife Program	Virginia Folklife Program	DC Commission--Folk Arts	Nevada Folk Arts Program	Hallockville Folklife Center--NY	Oregon Folklife Program	Massachusetts Cultural Council	Montana Folklife Program	RI Folk Arts Program	Louisiana Folklife Program	Florida Folklife Program	Mississippi Arts Commission	Haffenreffer Museum--Brown Univ.	Western Folklife Center	Florida Folklife Program	North Dakota Endowment on Arts	South Dakota Arts Council	ACTA--Fresno Arts Council	Alabama Folklife Program
440	What software application do you use to design your website?																						
441	Dreamweaver			1																			1
442	NetObjects Fusion MX																						
443	NetObjects Team Fusion		1																				
444	MS FrontPage				1				1							1				1			
445	GOLIVE																						
446	Xmetal																						
447	Adobe Pagemill				1																		
448	Netscape Composer																						
449	I code HTML	1	1																				
450	I outsource to another dept.					1	1	1		1					1								1
451	I outsource to a com. design co.			1							1	1		1				1					
452	In-house webmaster																						
453	No response												1						1		1		
454																							
455	Does this software have concurrent usability?																						
456	YES		1	1											1			1					1
457	NO				1			1	1														
458	Not Sure	1					1				1	1	1			1			1	1			1
459	No response					1					1												
460																							

	A	X	Y	Z	AA	AB	AC	AD	AE	AF	AG	AH	AI	AJ	AK	AL	AM	AN	AO	AP	AQ	AR	AS	AT	AU
1	Name of Organization	Kentucky Folklife Program	CCA/Trinidad State Jr. College	Vermont Folklife Center	WA State Arts Commission	Institute for Cultural Partnerships	Iowa Arts Council	Wisconsin Arts Board	South Georgia Folklife	Wyoming Arts Council	American Folklife Center	Maryland Folklife Program	Colorado Folk Arts Program	SC Arts Commission	Center for Southern Folklife	Conn. Cultural Heritage Arts	New Mexico Arts	LA County Arts Commission	Maine Folklife Center	Folklife Center--Inter. House	Traditional Arts Indiana	Georgia Folklife Prog.	Totals	Percentage	
440	What software application do you use to design your website?																								
441	Dreamweaver			1	1						1								1				6	11.3%	
442	NetObjects Fusion MX																						0	0.0%	
443	NetObjects Team Fusion																						1	1.9%	
444	MS FrontPage	1			1			1	1										1				9	17.0%	
445	GOLIVE			1																			1	1.9%	
446	Xmetal			1																			1	1.9%	
447	Adobe Pagemill									1													2	3.8%	
448	Netscape Composer																						0	0.0%	
449	I code HTML																						2	3.8%	
450	I outsource to another dept.						1			1	1	1	1		1			1		1			14	26.4%	
451	I outsource to a com. design co.			1		1	1														1	1	10	18.9%	
452	In-house webmaster													1		1							2	3.8%	
453	No response		1														1						5	9.4%	
454																							53	100.00%	
455	Does this software have concurrent usability?																								
456	YES				1					1													7	17.9%	
457	NO			1							1			1					1				7	17.9%	
458	Not Sure	1	1			1	1	1				1			1		1		1	1	1		20	51.3%	
459	No response					1							1				1						5	12.8%	
460																							39	100.00%	

	A	B	C	D	E	F	G	H	I	J	K	L	M	N	O	P	Q	R	S	T	U	V	W
1	Name of Organization	New York Folklore Society	Utah Folk Arts Program	WESTAF	Tennessee Folklife Program	Virginia Folklife Program	DC Commission--Folk Arts	Nevada Folk Arts Program	Hallockville Folklife Center--NY	Oregon Folklife Program	Massachusetts Cultural Council	Montana Folklife Program	RI Folk Arts Program	Louisiana Folklife Program	Florida Folklife Program	Mississippi Arts Commission	Haffenreffer Museum--Brown Univ.	Western Folklife Center	Florida Folklife Program	North Dakota Endowment on Arts	South Dakota Arts Council	ACTA--Fresno Arts Council	Alabama Folklife Program
461	What forms of information do you provide on your website?																						
462	Textual information	1	1	1	1	1	1	1	1	1	1	1	1	1	1	1	1	1	1	1	1	1	1
463	Tables of static information		1	1	1					1													
464	A dynamic calendar of events	1	1	1	1		1		1						1		1			1		1	
465	Graphic images from Clip Art				1		1		1											1			
466	Scanned photographs and slides.	1	1	1	1	1	1	1	1	1	1			1	1	1	1	1	1	1	1	1	1
467	Sound files				1						1					1		1				1	1
468	Video clips													1									1
469	Multimedia presentations													1									
470	Slide Shows																						
471	Searchable database	1		1			1				1			1									
472	Webcasting of event																1						
473	Web radio					1																	
474	Links to other websites		1																				
475	Grant Applications		1									1											
476	No response																						
477																							
478	If you publish sound files to the web, in what format are they published?																						
479	Not Applicable	1	1	1	1		1	1	1	1		1	1		1		1		1	1			
480	MP3																						
481	WAVE																						
482	Real Audio																	1				1	
483	Quicktime															1							
484	Liquid Audio																						
485	No response					1					1			1									1
486																							

	A	X	Y	Z	AA	AB	AC	AD	AE	AF	AG	AH	AI	AJ	AK	AL	AM	AN	AO	AP	AQ	AR	AS	AT	AU
1	Name of Organization	Kentucky Folklife Program	CCA/Trinidad State Jr. College	Vermont Folklife Center	WA State Arts Commission	Institute for Cultural Partnerships	Iowa Arts Council	Wisconsin Arts Board	South Georgia Folklife	Wyoming Arts Council	American Folklife Center	Maryland Folklife Program	Colorado Folk Arts Program	SC Arts Commission	Center for Southern Folklife	Conn. Cultural Heritage Arts	New Mexico Arts	LA County Arts Commission	Maine Folklife Center	Folklife Center--Inter. House	Traditional Arts Indiana	Georgia Folklife Prog.	Totals	Percentage	
461	What forms of information do you provide on your website?																								
462	Textual information	1	1	1	1	1	1	1	1	1	1	1	1	1	1	1		1	1	1	1	1	1	41	27.9%
463	Tables of static information	1		1						1								1						8	5.4%
464	A dynamic calendar of events			1			1	1		1	1			1	1	1							1	19	12.9%
465	Graphic images from Clip Art														1	1								6	4.1%
466	Scanned photographs and slides.	1	1		1	1	1	1	1	1	1		1	1	1	1			1	1	1	1	1	36	24.5%
467	Sound files	1			1	1		1	1		1			1					1					14	9.5%
468	Video clips							1	1		1													5	3.4%
469	Multimedia presentations										1													2	1.4%
470	Slide Shows				1												1				1			3	2.0%
471	Searchable database																							5	3.4%
472	Webcasting of event																							1	0.7%
473	Web radio																							1	0.7%
474	Links to other websites										1													2	1.4%
475	Grant Applications												1											3	2.0%
476	No response																1							1	0.7%
477																								147	100.00%
478	If you publish sound files to the web, in what format are they published?																								
479	Not Applicable		1				1			1		1	1	1	1	1	1			1	1	1	1	26	59.1%
480	MP3				1																			1	2.3%
481	WAVE					1																		1	2.3%
482	Real Audio	1			1	1		1	1		1			1					1					10	22.7%
483	Quicktime																							1	2.3%
484	Liquid Audio																							0	0.0%
485	No response			1																				5	11.4%
486																								44	100.00%

	A	B	C	D	E	F	G	H	I	J	K	L	M	N	O	P	Q	R	S	T	U	V	W	
1	Name of Organization	New York Folklore Society	Utah Folk Arts Program	WESTAF	Tennessee Folklife Program	Virginia Folklife Program	DC Commission--Folk Arts	Nevada Folk Arts Program	Hallockville Folklife Center--NY	Oregon Folklife Program	Massachusetts Cultural Council	Montana Folklife Program	RI Folk Arts Program	Louisiana Folklife Program	Florida Folklife Program	Mississippi Arts Commission	Haffenreffer Museum--Brown Univ.	Western Folklife Center	Florida Folklife Program	North Dakota Endowment on Arts	South Dakota Arts Council	ACTA--Fresno Arts Council	Alabama Folklife Program	
487	If you publish video files to the web, in what format are they published?																							
488	Not Applicable	1	1	1	1	1	1	1	1	1	1	1	1		1	1	1	1	1	1		1		
489	Real Video																							
490	Quicktime																							
491	Other																							
492	No response													1									1	
493																								
494	Do you credit the photographers of any media?																							
495	YES	1	1	1		1		1	1					1		1	1	1	1	1		1	1	
496	NO				1		1			1	1				1				1					
497	Not Sure																							
498	No response											1	1											
499																								
500	Do the subjects of your media know you have posted images, video, etc of them on the web?																							
501	YES	1		1		1	1	1	1		1			1	1	1		1	1				1	1
502	NO		1		1					1														
503	Not Sure																				1			
504	No response											1	1				1							
505																								

	A	X	Y	Z	AA	AB	AC	AD	AE	AF	AG	AH	AI	AJ	AK	AL	AM	AN	AO	AP	AQ	AR	AS	AT	AU
1	Name of Organization	Kentucky Folklife Program	CCA/Trinidad State Jr. College	Vermont Folklife Center	WA State Arts Commission	Institute for Cultural Partnerships	Iowa Arts Council	Wisconsin Arts Board	South Georgia Folklife	Wyoming Arts Council	American Folklife Center	Maryland Folklife Program	Colorado Folk Arts Program	SC Arts Commission	Center for Southern Folklore	Conn. Cultural Heritage Arts	New Mexico Arts	LA County Arts Commission	Maine Folklife Center	Folklife Center--Inter. House	Traditional Arts Indiana	Georgia Folklife Prog.	Totals	Percentage	
487	If you publish video files to the web, in what format are they published?																								
488	Not Applicable	1	1			1	1			1		1	1	1	1	1	1	1	1	1	1	1	1	35	83.3%
489	Real Video							1	1		1													3	7.1%
490	Quicktime																							0	0.0%
491	Other																							0	0.0%
492	No response			1	1																			4	9.5%
493																								42	100.00%
494	Do you credit the photographers of any media?																								
495	YES	1	1	1			1	1	1	1	1	1	1	1	1				1	1	1			29	69.0%
496	NO					1													1				1	9	21.4%
497	Not Sure																							0	0.0%
498	No response				1												1							4	9.5%
499																								42	100.00%
500	Do the subjects of your media know you have posted images, video, etc of them on the web?																								
501	YES	1	1	1		1	1	1			1	1	1	1	1				1	1	1			28	66.7%
502	NO								1	1						1						1	1	8	19.0%
503	Not Sure																							1	2.4%
504	No response				1												1							5	11.9%
505																								42	100.00%

	A	B	C	D	E	F	G	H	I	J	K	L	M	N	O	P	Q	R	S	T	U	V	W	
1	Name of Organization	New York Folklore Society	Utah Folk Arts Program	WESTAF	Tennessee Folklife Program	Virginia Folklife Program	DC Commission--Folk Arts	Nevada Folk Arts Program	Hallockville Folklife Center--NY	Oregon Folklife Program	Massachusetts Cultural Council	Montana Folklife Program	RI Folk Arts Program	Louisiana Folklife Program	Florida Folklife Program	Mississippi Arts Commission	Haffenreffer Museum--Brown Univ.	Western Folklife Center	Florida Folklife Program	North Dakota Endowment on Arts	South Dakota Arts Council	ACTA--Fresno Arts Council	Alabama Folklife Program	
506	What software applications do you use to supplement any of your website development?																							
507	Adobe Photoshop	1	1	1	1					1				1	1		1		1			1		
508	Adobe Illustrator		1																					
509	Adobe Premier		1																					
510	QuickTime		1												1		1							
511	JASC Paint Shop Pro		1																					
512	ClarisWorks							1																
513	Not sure																							
514	No response								1	1		1	1	1			1		1					1
515																								
516	If there were a product on the market that could maintain a contact database, a collections database including digitization of images, etc., and publish parts or all kinds of your information to the web, would this be something in which your program would be interested?																							
517	YES		1		1		1	1	1		1	1	1		1								1	1
518	NO	1																						
519	Not Sure			1		1				1				1	1	1	1	1	1	1	1	1		
520	No response																							
521																								

	A	X	Y	Z	AA	AB	AC	AD	AE	AF	AG	AH	AI	AJ	AK	AL	AM	AN	AO	AP	AQ	AR	AS	AT	AU
1	Name of Organization	Kentucky Folklife Program	CCA/Trinidad State Jr. College	Vermont Folklife Center	WA State Arts Commission	Institute for Cultural Partnerships	Iowa Arts Council	Wisconsin Arts Board	South Georgia Folklife	Wyoming Arts Council	American Folklife Center	Maryland Folklife Program	Colorado Folk Arts Program	SC Arts Commission	Center for Southern Folklife	Conn. Cultural Heritage Arts	New Mexico Arts	LA County Arts Comission	Maine Folklife Center	Folklife Center--Inter. House	Traditional Arts Indiana	Georgia Folklife Prog.	Totals	Percentage	
506	What software applications do you use to supplement any of your website development?																								
507	Adobe Photoshop	1	1	1	1	1			1	1		1	1					1	1	1			22	43.1%	
508	Adobe Illustrator																			1			2	3.9%	
509	Adobe Premier				1																		2	3.9%	
510	QuickTime		1	1																			5	9.8%	
511	JASC Paint Shop Pro								1														2	3.9%	
512	ClarisWorks																			1			2	3.9%	
513	Not sure						1				1												2	3.9%	
514	No response	1						1					1			1	1					1	14	27.5%	
515																							51	100.00%	
516	If there were a product on the market that could maintain a contact database, a collections database including digitization of images, etc., and publish parts or all kinds of your information to the web, would this be something in which your program would be interested?																								
517	YES	1	1	1	1	1	1		1		1	1	1		1	1	1	1				1	26	60.5%	
518	NO																						1	2.3%	
519	Not Sure						1		1				1					1	1	1			16	37.2%	
520	No response																						0	0.0%	
521																							43	100.00%	

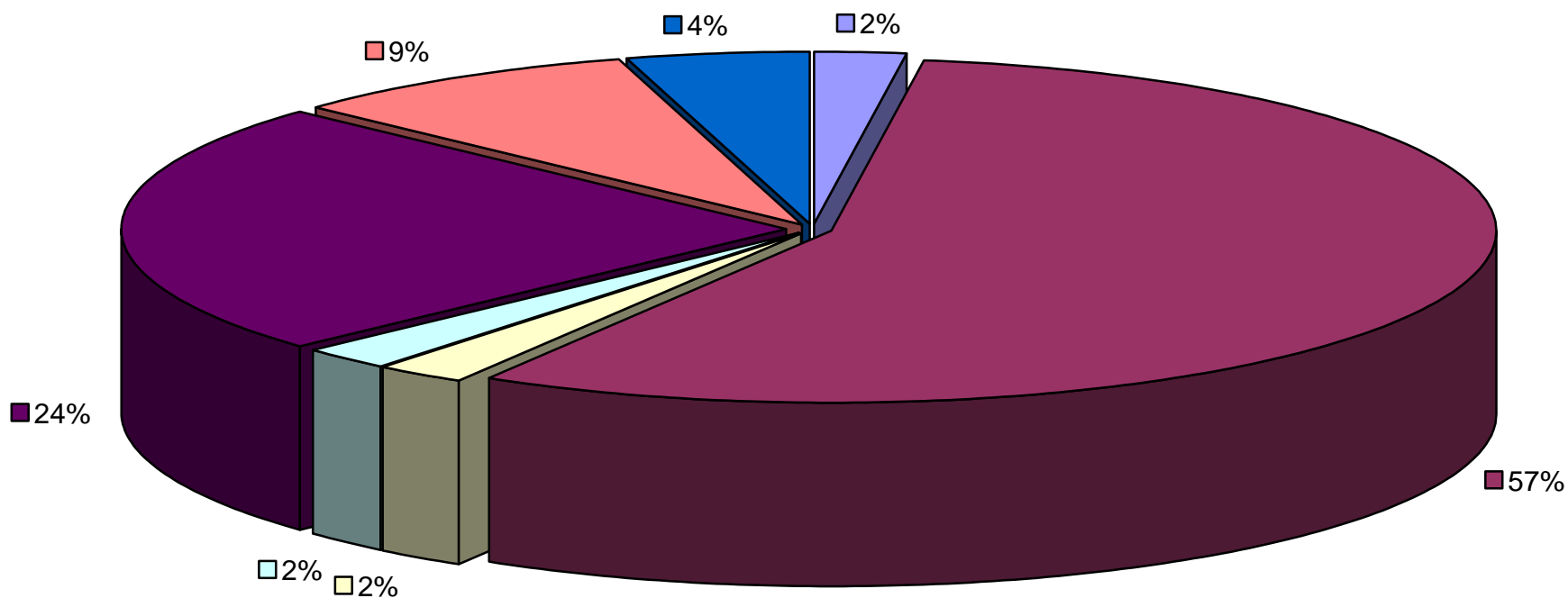
	A	B	C	D	E	F	G	H	I	J	K	L	M	N	O	P	Q	R	S	T	U	V	W
1	Name of Organization	New York Folklore Society	Utah Folk Arts Program	WESTAF	Tennessee Folklife Program	Virginia Folklife Program	DC Commission--Folk Arts	Nevada Folk Arts Program	Hallockville Folklife Center--NY	Oregon Folklife Program	Massachusetts Cultural Council	Montana Folklife Program	RI Folk Arts Program	Louisiana Folklife Program	Florida Folklife Program	Mississippi Arts Commission	Haffenreffer Museum--Brown Univ.	Western Folklife Center	Florida Folklife Program	North Dakota Endowment on Arts	South Dakota Arts Council	ACTA--Fresno Arts Council	Alabama Folklife Program
522	If there were workshops at NASAA or AFS meetings that walked you through certain procedures using databases, would you be interested?																						
523	YES		1		1	1	1	1	1	1	1	1		1	1	1			1	1		1	1
524	NO	1		1																			
525	Not Sure												1				1	1			1		
526	No response																						
527																							
528	What topics would you like to see at such workshops?																						
529	Converting text data into database format		1		1		1						1	1		1		1		1	1	1	
530	Using current contact database for mass mailings, merge documents, mailing labels.		1		1							1	1		1		1	1	1	1	1		
531	Creating forms for current contact or collections database.		1		1							1	1		1		1		1	1	1	1	
532	Eliminating double entry of data into separate databases.		1		1			1	1	1		1					1		1				
533	Creating a database system that works for my program.		1		1						1	1					1		1			1	1
534	Converting a database from one software application into another.		1		1			1	1			1	1				1	1					
535	Publishing a searchable MS Access database on web		1															1					
536	No response	1		1		1								1		1	1						
537																							

	A	X	Y	Z	AA	AB	AC	AD	AE	AF	AG	AH	AI	AJ	AK	AL	AM	AN	AO	AP	AQ	AR	AS	AT	AU
1	Name of Organization	Kentucky Folklife Program	CCA/Trinidad State Jr. College	Vermont Folklife Center	WA State Arts Commission	Institute for Cultural Partnerships	Iowa Arts Council	Wisconsin Arts Board	South Georgia Folklife	Wyoming Arts Council	American Folklife Center	Maryland Folklife Program	Colorado Folk Arts Program	SC Arts Commission	Center for Southern Folklife	Conn. Cultural Heritage Arts	New Mexico Arts	LA County Arts Commission	Maine Folklife Center	Folklife Center--Inter. House	Traditional Arts Indiana	Georgia Folklife Prog.	Totals	Percentage	
522	If there were workshops at NASAA or AFS meetings that walked you through certain procedures using databases, would you be interested?																								
523	YES	1	1	1	1	1	1		1	1	1	1	1	1		1		1					1	31	72.1%
524	NO																							2	4.7%
525	Not Sure						1							1		1		1	1	1	1			10	23.3%
526	No response																							0	0.0%
527																								43	100.00%
528	What topics would you like to see at such workshops?																								
529	Converting text data into database format	1	1	1	1		1		1	1	1												1	19	17.4%
530	Using current contact database for mass mailings, merge documents, mailing labels.			1	1				1	1			1									1		15	13.8%
531	Creating forms for current contact or collections database.			1	1					1				1	1		1					1	1	17	15.6%
532	Eliminating double entry of data into separate databases.	1		1						1	1			1	1								1	15	13.8%
533	Creating a database system that works for my program.	1	1	1					1		1	1				1	1	1		1				18	16.5%
534	Converting a database from one software application into another.	1	1	1	1								1											13	11.9%
535	Publishing a searchable MS Access database on web					1																		3	2.8%
536	No response							1							1				1					9	8.3%
537																								109	100.00%

	A	B	C	D	E	F	G	H	I	J	K	L	M	N	O	P	Q	R	S	T	U	V	W
1	Name of Organization	New York Folklore Society	Utah Folk Arts Program	WESTAF	Tennessee Folklife Program	Virginia Folklife Program	DC Commission--Folk Arts	Nevada Folk Arts Program	Hallockville Folklife Center--NY	Oregon Folklife Program	Massachusetts Cultural Council	Montana Folklife Program	RI Folk Arts Program	Louisiana Folklife Program	Florida Folklife Program	Mississippi Arts Commission	Haffenreffer Museum--Brown Univ.	Western Folklife Center	Florida Folklife Program	North Dakota Endowment on Arts	South Dakota Arts Council	ACTA--Fresno Arts Council	Alabama Folklife Program
538	Would you like to see a NASAA 2002 session addressing the results and implications of this survey?																						
539	YES	1	1	1	1		1	1	1	1	1	1	1	1	1	1			1	1	1	1	1
540	NO					1																	
541	Not Sure																						
542	No response															1	1						
543																							
544																							

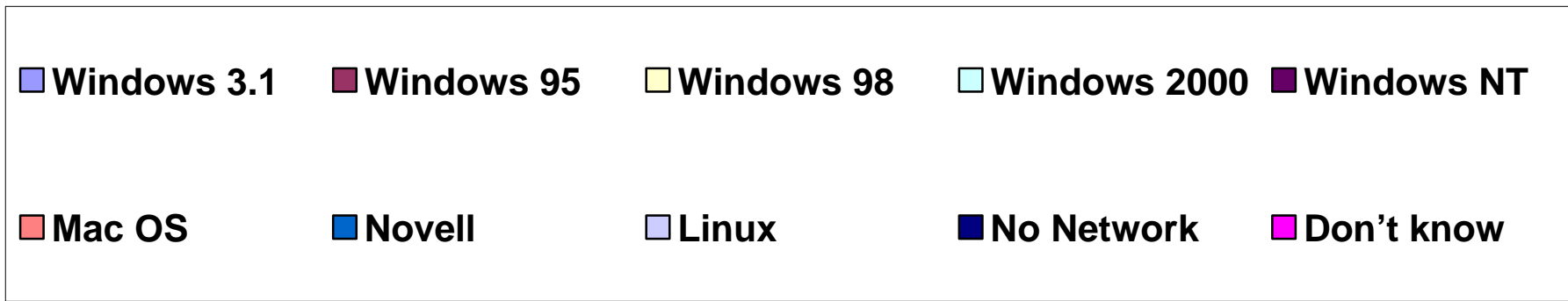
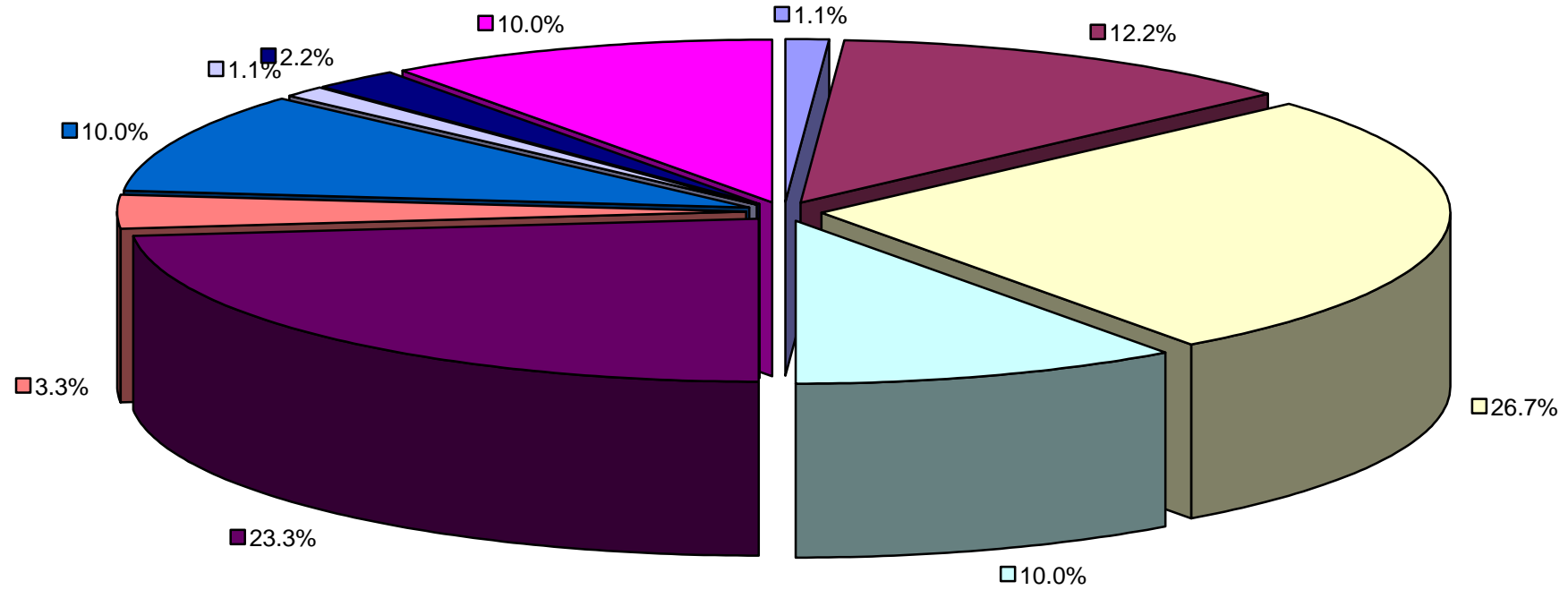
	A	X	Y	Z	AA	AB	AC	AD	AE	AF	AG	AH	AI	AJ	AK	AL	AM	AN	AO	AP	AQ	AR	AS	AT	AU
1	Name of Organization	Kentucky Folklife Program	CCA/Trinidad State Jr. College	Vermont Folklife Center	WA State Arts Commission	Institute for Cultural Partnerships	Iowa Arts Council	Wisconsin Arts Board	South Georgia Folklife	Wyoming Arts Council	American Folklife Center	Maryland Folklife Program	Colorado Folk Arts Program	SC Arts Commission	Center for Southern Folklore	Conn. Cultural Heritage Arts	New Mexico Arts	LA County Arts Comission	Maine Folklife Center	Folklife Center--Inter. House	Traditional Arts Indiana	Georgia Folklife Prog.	Totals	Percentage	
538	Would you like to see a NASAA 2002 session addressing the results and implications of this survey?																								
539	YES	1	1	1	1	1	1		1	1	1	1		1	1	1	1	1	1	1	1	1	1	38	86.4%
540	NO										1													2	4.5%
541	Not Sure												1											1	2.3%
542	No response						1																	3	6.8%
543																								44	100.00%
544																									

What kind of organization best describes you?

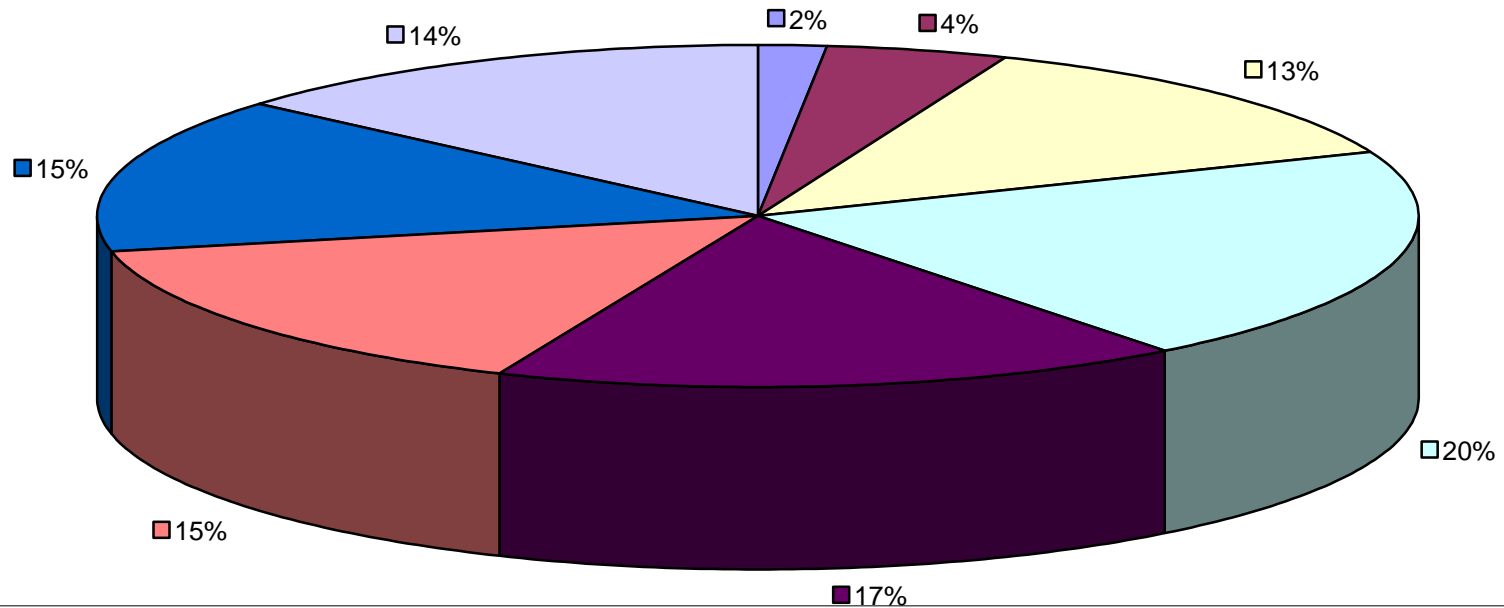


■ Federal ■ State ■ Regional ■ City ■ Private ■ Academic ■ Non-profit

What operating system do you use?



What is your program's current state of database development/use?



■ No database in place

■ Limited database in use

■ Have several different databases in use but desire to streamline the system.

■ Database system in place that is adequate for immediate needs

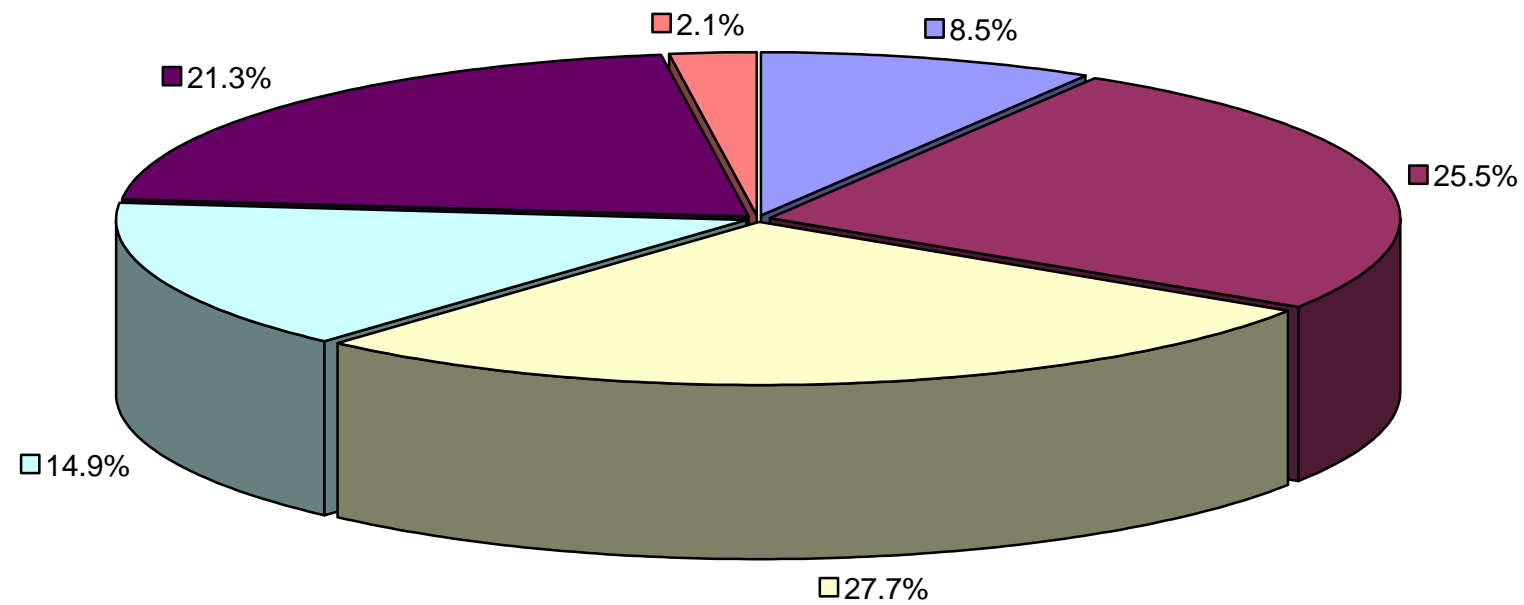
■ Desire improvements in current system

■ State of data entry is relatively satisfactory for current system

■ Agency is currently supportive of database improvement for the program

■ Even with improvements in database development, personnel/time issues for data entry will remain a problem

How would you rate your Information Technology people in terms of performance satisfaction?



■ Don't have them

■ Greatly satisfied

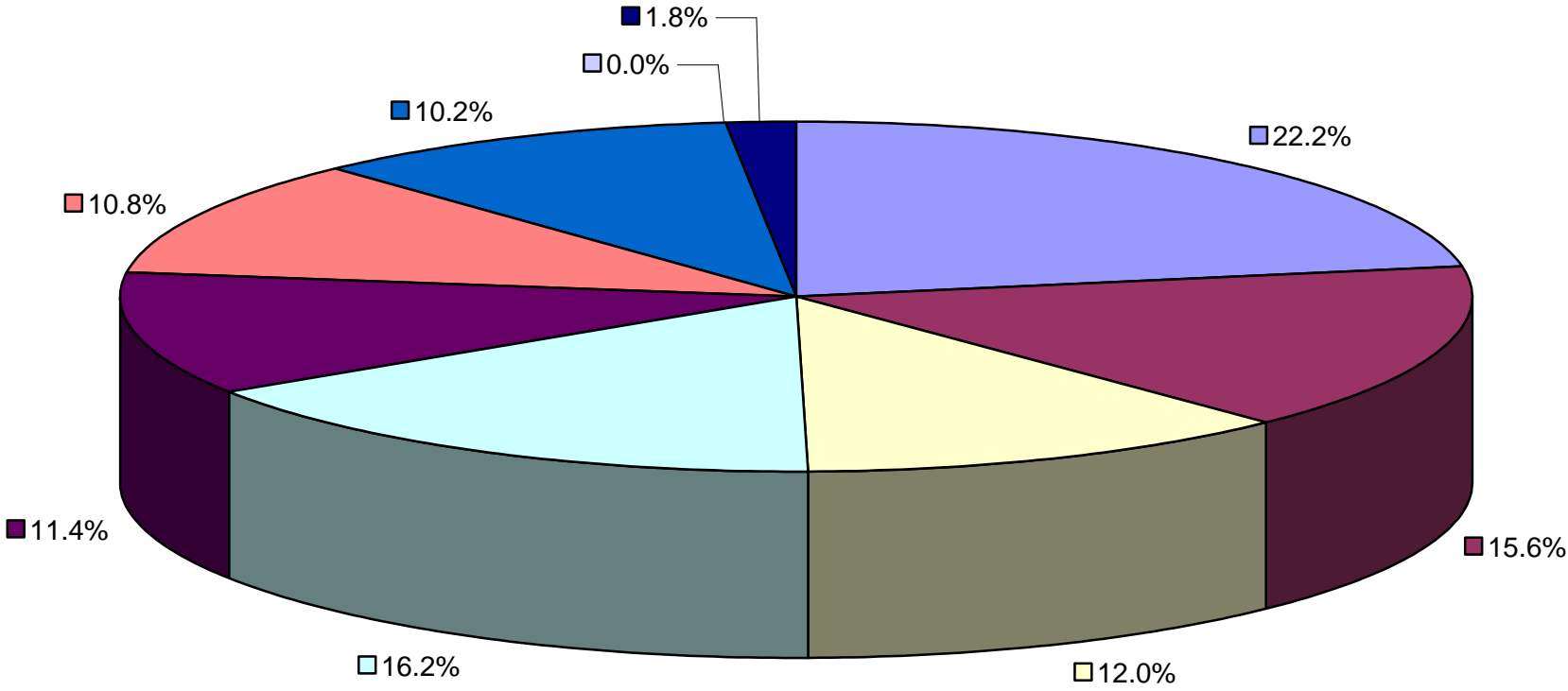
■ Somewhat satisfied

■ Satisfied

■ Less than satisfied

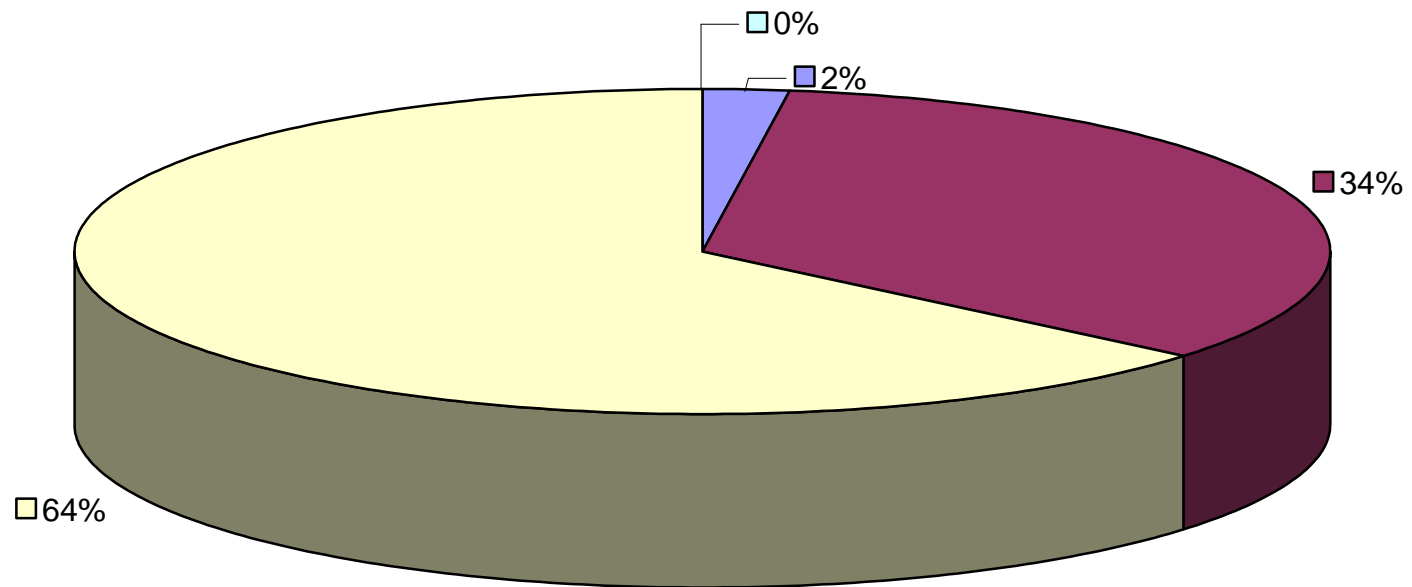
■ Greatly dissatisfied (they suck!)

What are the primary functions of this contact database?



- Contact database
- Keep mailing lists
- Announce events
- Artists registry
- Cultural survey
- Grants management
- Fieldwork management
- Archival Finding Aid
- No response

How would you rate yourself as a computer user?



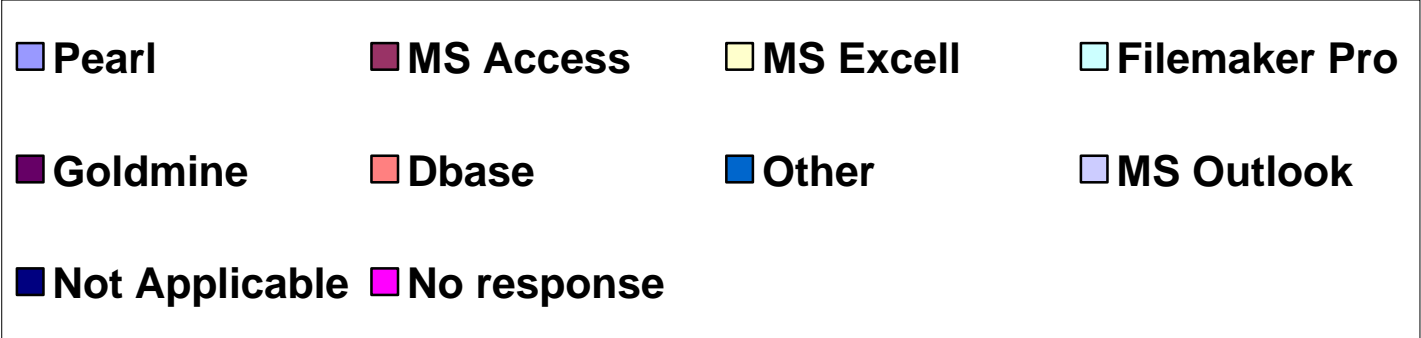
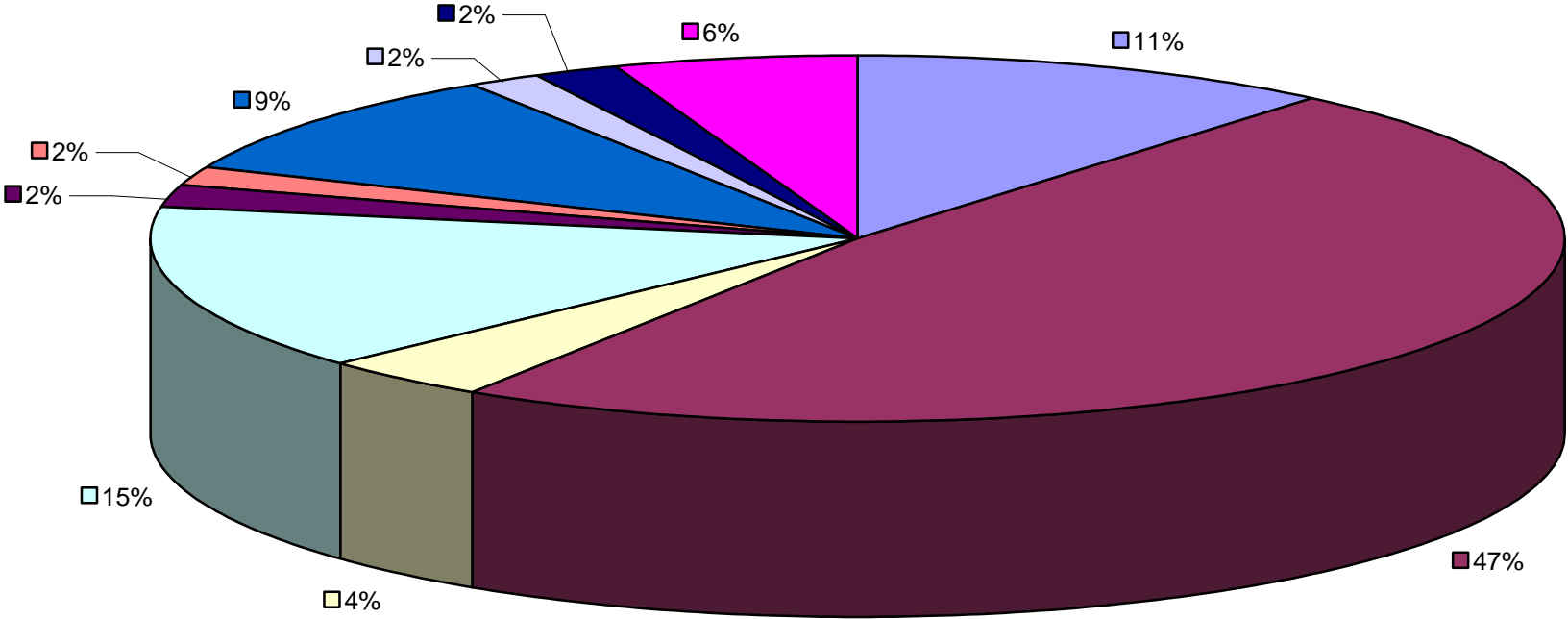
Expert

Proficient

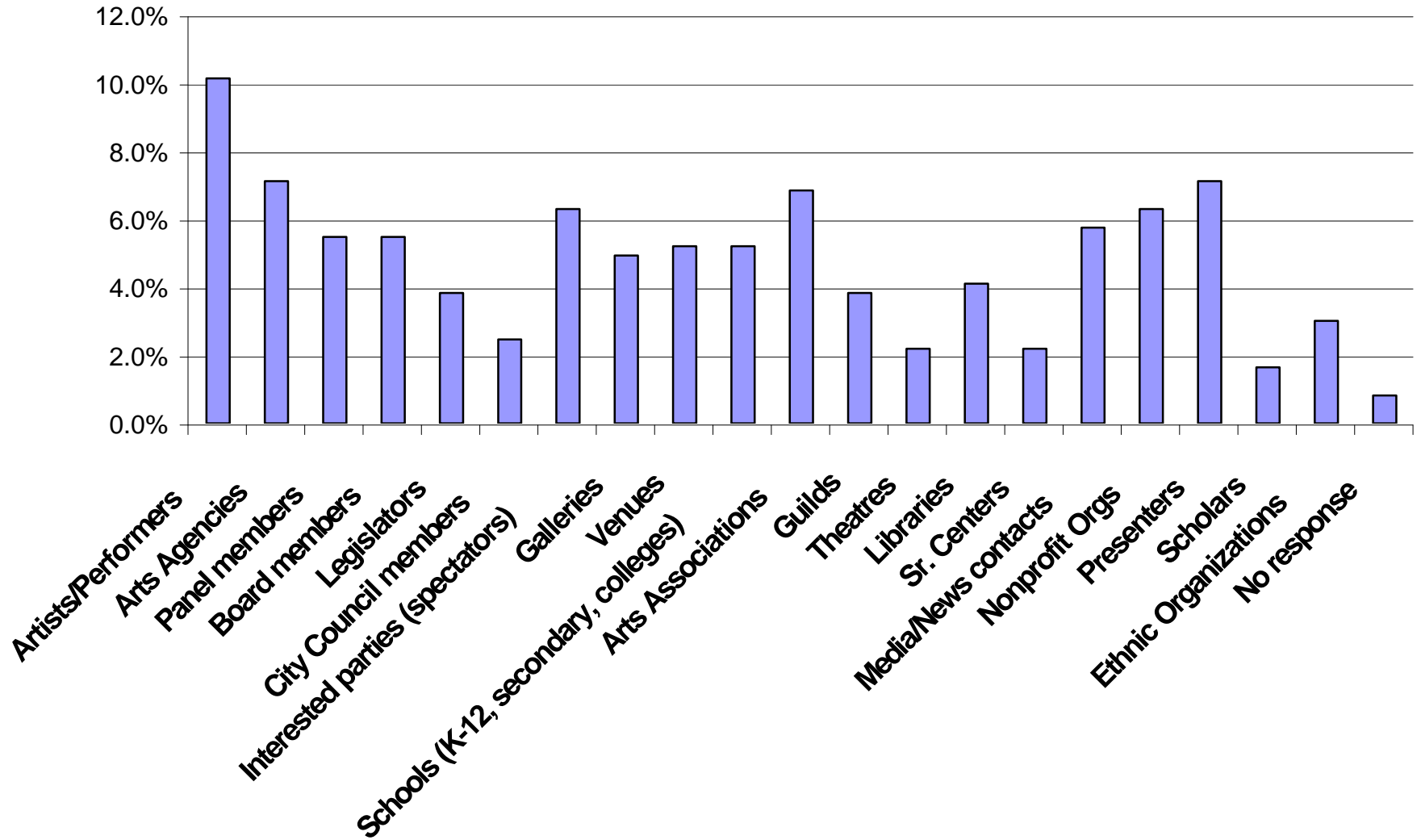
Average

Novice

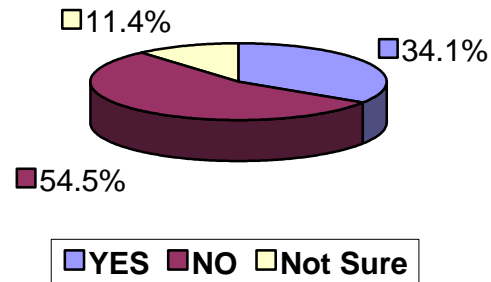
What kind of database are you using at the moment for these contacts?



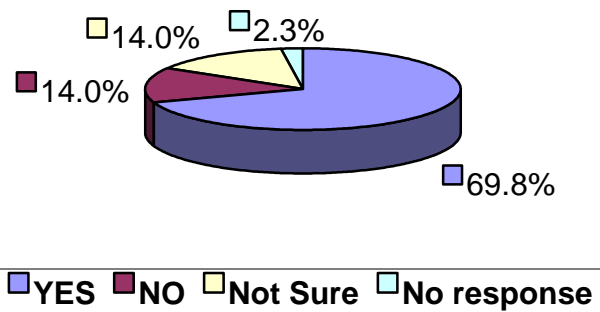
What kinds of contacts do you keep in your contact database?



In your organization, do you have the option to change to other platforms and software applications?



Is there a governing person, department, or agency that determines hardware and software policies in your organization?



Do your Information Technology people provide technical support for your software applications?

